

Technical data on page 54

aR	TYPES M	RATED VOLTAGE ~690V
----	-------------------	------------------------

Technical data:		Application:
Standards: IEC 60269-4	Breaking capacity: ~200kA Rated voltage: ~690V	Fuse-links type M are applied in fuse base (for example PK).

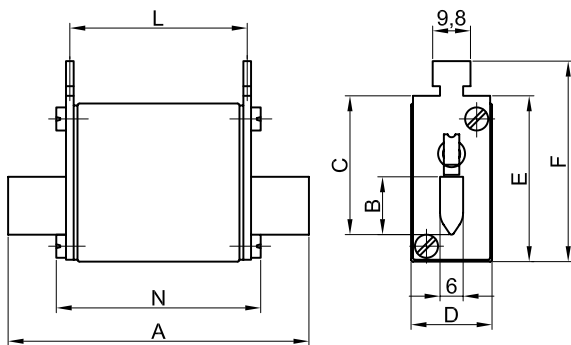
M00UQ01/160A/690V



Size	In (A)	Type (visual indicator with grip for microswitch NVS 5)	Code No.	Operating I ² t-value (A ² s)	Power dissipation (W)	Char.	Packaging (pcs)	Weight (g)
00	10	M00UQ01/10A/690V	004371204	23	3	aR	3/72	140
	16	M00UQ01/16A/690V	004371205	46	4	aR	3/72	140
	20	M00UQ01/20A/690V	004371206	95	5	aR	3/72	140
	25	M00UQ01/25A/690V	004371207	165	6	aR	3/72	140
	32	M00UQ01/32A/690V	004371208	290	7	aR	3/72	140
	35	M00UQ01/35A/690V	004371209	400	8	aR	3/72	140
	40	M00UQ01/40A/690V	004371210	640	9	aR	3/72	140
	50	M00UQ01/50A/690V	004371211	1.000	10	aR	3/72	140
	63	M00UQ01/63A/690V	004371212	1.800	12,3	aR	3/72	140
	80	M00UQ01/80A/690V	004371213	2.800	16,3	aR	3/72	140
	100	M00UQ01/100A/690V	004371214	4.600	20	aR	3/72	140
	125	M00UQ01/125A/690V	004371215	8.000	26,9	aR	3/72	140
	160	M00UQ01/160A/690V	004371216	16.500	31,6	aR	3/72	140
	200*	M00UQ02/200A/690V	004741217	22.000	46	aR	3/72	140
	250*	M00UQ02/250A/690V	004741219	44.000	49	aR	3/72	140

*Technical data on page 78.

Dimensions:



Size	A	B	C	D	E	F	L	N
00	78	15	35	30	42	51	48	52

remember

Motor drives: Servo drive



Servo drive for AC servo motor (CNC machine)

aR

TYPES
M

RATED VOLTAGE
~690V

Technical data:		Application:
Standards: IEC 60269-4	Breaking capacity: ~200kA Rated voltage: ~690V	Fuse-link type M are applied in fuse base PK

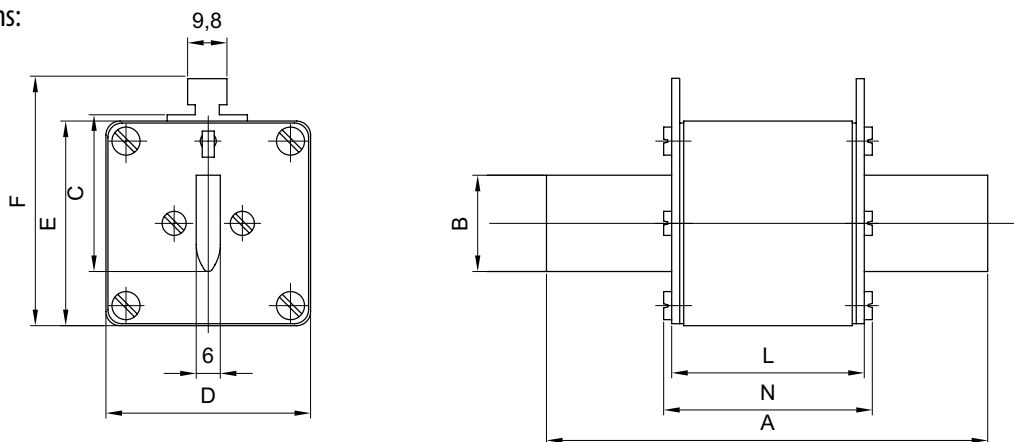
M1UQ02/160A/690V



Size	In (A)	Type (visual indicator)	Code No.	Operating I ² t-value (A ² s)	Power dissipation (W)	Char.	Packaging (pcs.)	Weight (g)
1	63	M1UQ02/63A/690V	004743212	1.200	16	aR	3/24	500
	80	M1UQ02/80A/690V	004743213	1.800	21	aR	3/24	500
	100	M1UQ02/100A/690V	004743214	2.500	27	aR	3/24	500
	125	M1UQ02/125A/690V	004743215	4.600	32	aR	3/24	500
	160	M1UQ02/160A/690V	004743216	8.400	36	aR	3/24	500
	200	M1UQ02/200A/690V	004743217	14.000	46	aR	3/24	500
	250	M1UQ02/250A/690V	004743219	26.000	51	aR	3/24	500
	315	M1UQ02/315A/690V	004743221	42.000	66	aR	3/24	500
	350	M1UQ02/350A/690V	004743222	54.000	69	aR	3/24	500
	400	M1UQ02/400A/690V	004743223	98.000	80	aR	3/24	500
2	250	M2UQ02/250A/690V	004744219	21.500	53	aR	1/16	650
	315	M2UQ02/315A/690V	004744221	33.800	68	aR	1/16	650
	350	M2UQ02/350A/690V	004744222	48.900	71	aR	1/16	650
	400	M2UQ02/400A/690V	004744223	85.000	75	aR	1/16	650
	450	M2UQ02/450A/690V	004744225	120.000	80	aR	1/16	650
	500	M2UQ02/500A/690V	004744226	150.000	91	aR	1/16	650
3	550	M2UQ02/550A/690V	004744227	200.000	100	aR	1/16	650
	630	M2UQ02/630A/690V	004744228	305.000	120	aR	1/16	650
	400	M3UQ02/400A/690V	004745223	69.000	81	aR	3/24	850
	450	M3UQ02/450A/690V	004745225	96.000	89	aR	3/24	850
	500	M3UQ02/500A/690V	004745226	127.000	110	aR	3/24	850
	630	M3UQ02/630A/690V	004745228	225.000	121	aR	3/24	850
	710	M3UQ02/710A/690V	004745229	320.000	130	aR	3/24	850
	800	M3UQ02/800A/690V	004745230	525.000	145	aR	3/24	850

Note: for size 1 it is possible for mounting NV55

Dimensions:



Size	A	B	C	D	E	F	L	N
1	135	24	40	46	52	62	65	72
2	150	30	48	54	61	71	65	72
3	150	37	60	64	74	84	65	72

Technical data on page 54

aR

TYPES
S80mm

RATED VOLTAGE
~690V

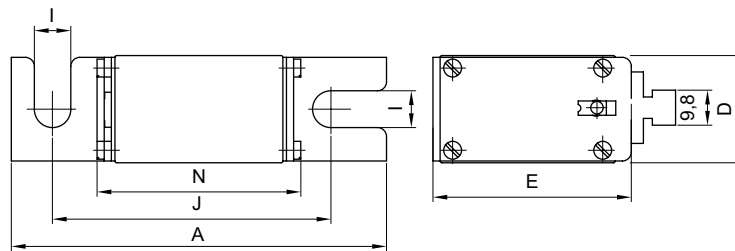
Technical data:		Application:
Standards: IEC 60269-4	Breaking capacity: ~200kA Rated voltage: ~690V	Fuse-links type S of size 00C and 00 are applied in fuse base US00-1/80 and mounted by screws to busbars.

S00UQ01/80/350A/690V



Size	In (A)	Type (visual indicator with grip for microswitch MVS S)	Code No.	Operating Pt-value (A ² s)	Power dissipation (W)	Char.	Packaging (pcs)	Weight (g)
00C	10	S00CUQ01/80/10A/690V	004371104	23	3	aR	3/54	150
	16	S00CUQ01/80/16A/690V	004371105	46	4	aR	3/54	150
	20	S00CUQ01/80/20A/690V	004371106	95	5	aR	3/54	150
	25	S00CUQ01/80/25A/690V	004371107	165	6	aR	3/54	150
	32	S00CUQ01/80/32A/690V	004371108	290	7	aR	3/54	150
	35	S00CUQ01/80/35A/690V	004371109	400	8	aR	3/54	150
	40	S00CUQ01/80/40A/690V	004371110	640	9	aR	3/54	150
	50	S00CUQ01/80/50A/690V	004371111	1.000	10	aR	3/54	150
	63	S00CUQ01/80/63A/690V	004371112	1.800	12,3	aR	3/54	150
	80	S00CUQ01/80/80A/690V	004371113	2.800	16,3	aR	3/54	150
	100	S00CUQ01/80/100A/690V	004371114	4.600	20	aR	3/54	150
	125	S00CUQ01/80/125A/690V	004371115	8.000	26,9	aR	3/54	150
	160	S00CUQ01/80/160A/690V	004371116	16.500	31,6	aR	3/54	150
	200	S00CUQ01/80/200A/690V	004371117	23.000	38,7	aR	3/54	150
	250	S00CUQ01/80/250A/690V	004371119	46.000	43,8	aR	3/54	150
315	S00CUQ01/80/315A/690V	004371121	80.000	54	aR	3/54	150	
00	350	S00UQ01/80/350A/690V	004371122	100.000	60	aR	3/54	150
	400	S00UQ01/80/400A/690V	004371123	120.000	70	aR	3/54	150

Dimensions:



Size	A	D	E	I	J	N
00C	101	21	40	8,5	78	54
00	105	30	51	10,3	78	56

remember

»Only fuses for semiconductor protection give us reliable protection for motor drives« said designer with more than 20 years work experience!



aR

TYPES
S80mm

RATED VOLTAGE
~690V

Technical data:

Standards:
IEC 60269-4

Breaking capacity:
~200kA
Rated voltage:
~690V

Application:

Fuse-links type S 80mm of size 1, 2, 3 are applied in universal fuse base US1..3-1/80-110 and mounted by screws to busbars.

S1UQ01/80/350A/690V



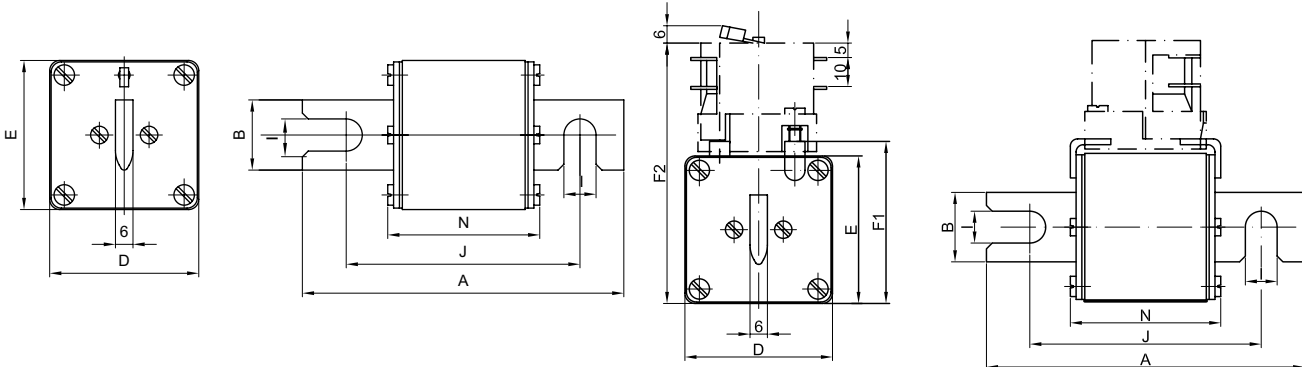
S1MUQ01/80/350A/690V



Size	In (A)	Type with visual indicator	Code No.	Operating I ^t -value (A ² s)	Power dissipation (W)	Type with centre trip indicator for microswitch MK		Code No.	Char.	Pack. (pcs)	Weight (g)
						Type with centre trip indicator for microswitch MK	Code No.				
1	80	S1UQ01/80/80A/690V	004383113	2.300	15,6	S1MUQ01/80/80A/690V	004383713	aR	1/26	500	
	100	S1UQ01/80/100A/690V	004383114	4.600	20	S1MUQ01/80/100A/690V	004383714	aR	1/26	500	
	125	S1UQ01/80/125A/690V	004383115	6.600	25	S1MUQ01/80/125A/690V	004383715	aR	1/26	500	
	160	S1UQ01/80/160A/690V	004383116	10.000	32,2	S1MUQ01/80/160A/690V	004383716	aR	1/26	500	
	200	S1UQ01/80/200A/690V	004383117	18.000	39,4	S1MUQ01/80/200A/690V	004383717	aR	1/26	500	
	250	S1UQ01/80/250A/690V	004383119	32.000	49,4	S1MUQ01/80/250A/690V	004383719	aR	1/26	500	
	315	S1UQ01/80/315A/690V	004383121	58.000	60	S1MUQ01/80/315A/690V	004383721	aR	1/26	500	
	350	S1UQ01/80/350A/690V	004383122	78.000	63	S1MUQ01/80/350A/690V	004383722	aR	1/26	500	
	400	S1UQ01/80/400A/690V	004383123	110.000	66	S1MUQ01/80/400A/690V	004383723	aR	1/26	500	
	450	S1UQ01/80/450A/690V	004383125	155.000	72	S1MUQ01/80/450A/690V	004383725	aR	1/26	500	
	500	S1UQ01/80/500A/690V	004383126	200.000	73	S1MUQ01/80/500A/690V	004383726	aR	1/26	500	
	550	S1UQ01/80/550A/690V	004383127	250.000	80	S1MUQ01/80/550A/690V	004383727	aR	1/26	500	
	630	S1UQ01/80/630A/690V	004383128	330.000	86	S1MUQ01/80/630A/690V	004383728	aR	1/26	500	
710*	S1UQ01/80/710A/690V	004383129	470.000	92	S1MUQ02/80/710A/690V	004743735	aR	1/26	500		
2	400	S2UQ01/80/400A/690V	004384123	85.000	70	S2MUQ01/80/400A/690V	004384723	aR	1/16	650	
	450	S2UQ01/80/450A/690V	004384125	125.000	76	S2MUQ01/80/450A/690V	004384725	aR	1/16	650	
	500	S2UQ01/80/500A/690V	004384126	165.000	80	S2MUQ01/80/500A/690V	004384726	aR	1/16	650	
	550	S2UQ01/80/550A/690V	004384127	220.000	82	S2MUQ01/80/550A/690V	004384727	aR	1/16	650	
	630	S2UQ01/80/630A/690V	004384128	310.000	85	S2MUQ01/80/630A/690V	004384728	aR	1/16	650	
	710	S2UQ01/80/710A/690V	004384129	460.000	91	S2MUQ01/80/710A/690V	004384729	aR	1/16	650	
	800	S2UQ01/80/800A/690V	004384130	720.000	95	S2MUQ01/80/800A/690V	004384730	aR	1/16	650	
	900*	S2UQ01/80/900A/690V	004384131	920.000	115	S2MUQ02/80/900A/690V	004744735	aR	1/16	650	
	1000*	S2UQ01/80/1000A/690V	004384132	1.300.000	124	S2MUQ02/80/1000A/690V	004744736	aR	1/16	650	
	3	630	S3UQ01/80/630A/690V	004385128	260.000	102	S3MUQ01/80/630A/690V	004385728	aR	1/16	850
710		S3UQ01/80/710A/690V	004385129	330.000	109	S3MUQ01/80/710A/690V	004385729	aR	1/16	850	
800		S3UQ01/80/800A/690V	004385130	500.000	117	S3MUQ01/80/800A/690V	004385730	aR	1/16	850	
900		S3UQ01/80/900A/690V	004385131	920.000	115	S3MUQ01/80/900A/690V	004385731	aR	1/16	850	
1000		S3UQ01/80/1000A/690V	004385132	1.000.000	131	S3MUQ01/80/1000A/690V	004385732	aR	1/16	850	
1100		S3UQ01/80/1100A/690V	004385135	1.500.000	140	S3MUQ01/80/1100A/690V	004385734	aR	1/16	850	
1250		S3UQ01/80/1250A/690V	004385133	2.300.000	152	S3MUQ01/80/1250A/690V	004385733	aR	1/16	850	
1400*		S3UQ01/80/1400A/690V	004385134	2.600.000	156	S3MUQ01/80/1400A/690V	004745735	aR	1/16	850	

Dimensions:

*Technical data on page 79.



Size	A	B	D	E	F1	F2	I	J	N
1	110	24	51	51	56	90	11	80	52
2	110	30	60	60	65	99	11	80	52
3	110	37	75	75	80	114	11	80	52

For more information visit: [www.eti.si/Electrotechnical products/Semiconductor protection](http://www.eti.si/Electrotechnical%20products/Semiconductor%20protection)

Technical data on page 54

aR

TYPES
S110mm

RATED VOLTAGE
~690V

Technical data:

Standards:
IEC 60269-4

Breaking capacity:
~200kA
Rated voltage:
~690V

Application:

Fuse-links type S 110mm of size 1, 2, 3 are applied in universal fuse base US1..3-1/80-110 and mounted by screws to busbars.

Size	In (A)	Type with visual indicator	Code No.	Operating I _t -value (A ² s)	Power dissipation (W)	Type with centre trip indicator for microswitch MK	Code No.	Char.	Pack. (pcs)	Weight (g)
1	80	S1UQ01/110/80A/690V	004393113	2.300	15,6	S1MUQ01/110/80A/690V	004393713	aR	1/26	500
	100	S1UQ01/110/100A/690V	004393114	4.600	20	S1MUQ01/110/100A/690V	004393714	aR	1/26	500
	125	S1UQ01/110/125A/690V	004393115	6.600	25	S1MUQ01/110/125A/690V	004393715	aR	1/26	500
	160	S1UQ01/110/160A/690V	004393116	10.000	32,2	S1MUQ01/110/160A/690V	004393716	aR	1/26	500
	200	S1UQ01/110/200A/690V	004393117	18.000	39,4	S1MUQ01/110/200A/690V	004393717	aR	1/26	500
	250	S1UQ01/110/250A/690V	004393119	32.000	49,4	S1MUQ01/110/250A/690V	004393719	aR	1/26	500
	315	S1UQ01/110/315A/690V	004393121	58.000	60	S1MUQ01/110/315A/690V	004393721	aR	1/26	500
	350	S1UQ01/110/350A/690V	004393122	78.000	63	S1MUQ01/110/350A/690V	004393722	aR	1/26	500
	400	S1UQ01/110/400A/690V	004393123	110.000	66	S1MUQ01/110/400A/690V	004393723	aR	1/26	500
	450	S1UQ01/110/450A/690V	004393125	155.000	72	S1MUQ01/110/450A/690V	004393725	aR	1/26	500
	500	S1UQ01/110/500A/690V	004393126	200.000	73	S1MUQ01/110/500A/690V	004393726	aR	1/26	500
	550	S1UQ01/110/550A/690V	004393127	250.000	80	S1MUQ02/110/550A/690V	004743727	aR	1/26	500
	630	S1UQ01/110/630A/690V	004393128	330.000	86	S1MUQ01/110/630A/690V	004393728	aR	1/26	500
	710*	S1UQ01/110/710A/690V	004393129	470.000	92	S1MUQ02/110/710A/690V	004743729	aR	1/26	500
	2	400	S2UQ01/110/400A/690V	004394123	85.000	70	S2MUQ01/110/400A/690V	004394723	aR	1/16
450		S2UQ01/110/450A/690V	004394125	125.000	76	S2MUQ01/110/450A/690V	004394725	aR	1/16	650
500		S2UQ01/110/500A/690V	004394126	165.000	80	S2MUQ01/110/500A/690V	004394726	aR	1/16	650
550		S2UQ01/110/550A/690V	004394127	220.000	82	S2MUQ02/110/550A/690V	004744727	aR	1/16	650
630		S2UQ01/110/630A/690V	004394128	310.000	85	S2MUQ01/110/630A/690V	004394728	aR	1/16	650
710		S2UQ01/110/710A/690V	004394129	460.000	91	S2MUQ01/110/710A/690V	004394729	aR	1/16	650
800		S2UQ01/110/800A/690V	004394130	720.000	95	S2MUQ01/110/800A/690V	004394730	aR	1/16	650
3	900*	S2UQ01/110/900A/690V	004394131	920.000	115	S2MUQ02/110/900A/690V	004744731	aR	1/16	650
	1000*	S2UQ01/110/1000A/690V	004394132	1.300.000	124	S2MUQ02/110/1000A/690V	004744732	aR	1/16	650
	630	S3UQ01/110/630A/690V	004395128	260.000	102	S3MUQ01/110/630A/690V	004395728	aR	3/24	850
	710	S3UQ01/110/710A/690V	004395129	330.000	109	S3MUQ01/110/710A/690V	004395729	aR	3/24	850
	800	S3UQ01/110/800A/690V	004395130	500.000	117	S3MUQ01/110/800A/690V	004395730	aR	3/24	850
	900	S3UQ01/110/900A/690V	004395131	710.000	118	S3MUQ01/110/900A/690V	004395731	aR	3/24	850
	1000	S3UQ01/110/1000A/690V	004395132	1.000.000	131	S3MUQ01/110/1000A/690V	004395732	aR	3/24	850
1100	S3UQ01/110/1100A/690V	004395134	1.300.000	130	S3MUQ01/110/1100A/690V	004395734	aR	3/24	850	
1250	S3UQ01/110/1250A/690V	004395133	2.300.000	152	S3MUQ01/110/1250A/690V	004395733	aR	3/24	850	
1400*	S3UQ01/110/1400A/690V	004395135	2.600.000	156	S3MUQ02/110/1400A/690V	004745734	aR	3/24	850	

*Technical data on page 79.

S1UQ01/110/450A/690V

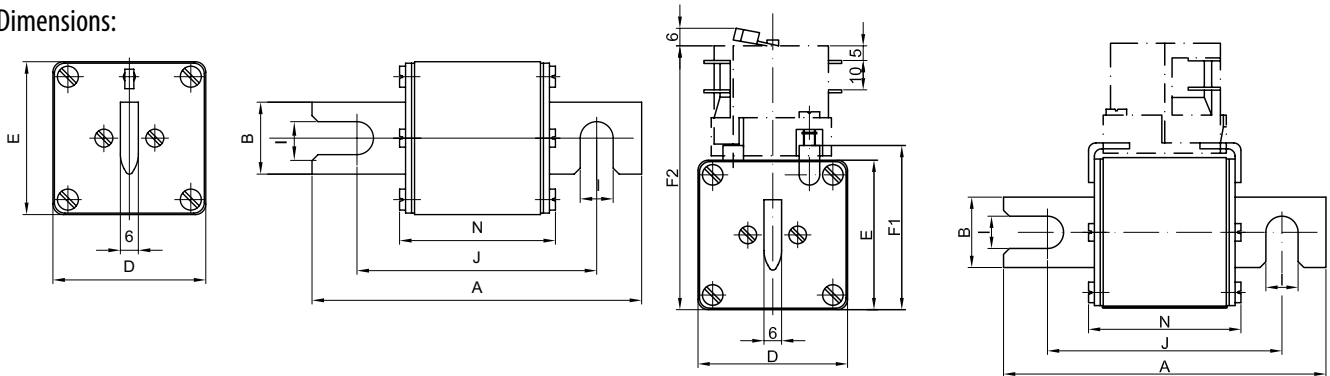


S1MUQ01/110/450A/690V



ULTRA QUICK

Dimensions:



Size	A	B	D	E	F1	F2	I	J	N
1	140	24	51	51	56	90	11	110	52
2	140	30	60	60	65	99	11	110	52
3	140	37	75	75	80	114	11	110	52

aR	TYPES G	RATED VOLTAGE ~690V
-----------	-------------------	-------------------------------

Technical data:		Application:
Standards: IEC 60269-4	Breaking capacity: ~200kA Rated voltage: ~690V	Fuse-links type G has threaded studs so fuses are mounted by special screws to busbars.

G1UQ01/630A/690V



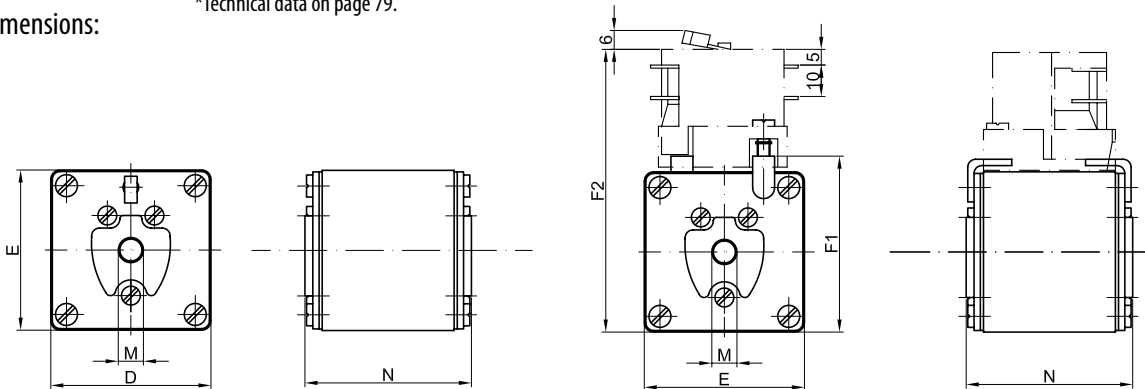
G2MUQ01/630A/690V



Size	In (A)	Type with visual indicator	Code No.	Operating I ² t-value (A ² s)	Power dissipation (W)	Type with centre trip indicator for microswitch MK		Char.	Pack. (pcs)	Weight (g)
						Type with centre trip indicator for microswitch MK	Code No.			
1	80	G1UQ01/80A/690V	004373513	2.300	15,6	G1MUQ01/80A/690V	004373613	aR	2/52	500
	100	G1UQ01/100A/690V	004373514	4.600	20	G1MUQ01/100A/690V	004373614	aR	2/52	500
	125	G1UQ01/125A/690V	004373515	6.600	25	G1MUQ01/125A/690V	004373615	aR	2/52	500
	160	G1UQ01/160A/690V	004373516	10.000	32,2	G1MUQ01/160A/690V	004373616	aR	2/52	500
	200	G1UQ01/200A/690V	004373517	18.000	39,4	G1MUQ01/200A/690V	004373617	aR	2/52	500
	250	G1UQ01/250A/690V	004373519	32.000	49,4	G1MUQ01/250A/690V	004373619	aR	2/52	500
	315	G1UQ01/315A/690V	004373521	58.000	60	G1MUQ01/315A/690V	004373621	aR	2/52	500
	350	G1UQ01/350A/690V	004373522	78.000	63	G1MUQ01/350A/690V	004373622	aR	2/52	500
	400	G1UQ01/400A/690V	004373523	110.000	66	G1MUQ01/400A/690V	004373623	aR	2/52	500
	2	450	G1UQ01/450A/690V	004373525	155.000	72	G1MUQ01/450A/690V	004373625	aR	2/52
500		G1UQ01/500A/690V	004373526	200.000	73	G1MUQ01/500A/690V	004373626	aR	2/52	500
550		G1UQ01/550A/690V	004373527	250.000	80	G1MUQ02/550A/690V	004743627	aR	2/52	500
630		G1UQ01/630A/690V	004373528	330.000	86	G1MUQ01/630A/690V	004373628	aR	2/52	500
710*		G1UQ01/710A/690V	004373529	470.000	84	G1MUQ02/710A/690V	004743629	aR	2/52	500
400		G2UQ01/400A/690V	004374523	85.000	70	G2MUQ01/400A/690V	004374623	aR	2/32	650
450		G2UQ01/450A/690V	004374525	125.000	76	G2MUQ01/450A/690V	004374625	aR	2/32	650
500		G2UQ01/500A/690V	004374526	165.000	80	G2MUQ01/500A/690V	004374626	aR	2/32	650
550		G2UQ01/550A/690V	004374527	220.000	82	G2MUQ02/550A/690V	004744627	aR	2/32	650
630		G2UQ01/630A/690V	004374528	310.000	85	G2MUQ01/630A/690V	004374628	aR	2/32	650
3	710	G2UQ01/710A/690V	004374529	460.000	91	G2MUQ01/710A/690V	004374629	aR	2/32	650
	800	G2UQ01/800A/690V	004374530	720.000	95	G2MUQ01/800A/690V	004374630	aR	2/32	650
	900*	G2UQ01/900A/690V	004374531	920.000	116	G2MUQ02/900A/690V	004744631	aR	2/32	650
	1000*	G2UQ01/1000A/690V	004374532	1.300.000	121	G2MUQ02/1000A/690V	004744632	aR	2/32	650
	630	G3UQ01/630A/690V	004375528	260.000	102	G3MUQ01/630A/690V	004375628	aR	2/32	850
	710	G3UQ01/710A/690V	004375529	330.000	109	G3MUQ01/710A/690V	004375629	aR	2/32	850
	800	G3UQ01/800A/690V	004375530	500.000	117	G3MUQ01/800A/690V	004375630	aR	2/32	850
	900	G3UQ01/900A/690V	004375531	710.000	128	G3MUQ01/900A/690V	004745631	aR	2/32	850
	1000	G3UQ01/1000A/690V	004375532	1.000.000	131	G3MUQ01/1000A/690V	004375632	aR	2/32	850
	1250	G3UQ01/1250A/690V	004375533	2.300.000	152	G3MUQ01/1250A/690V	004375633	aR	2/32	850
	1400*	G3UQ01/1400A/690V	004375534	2.600.000	162	G3MUQ02/1400A/690V	004745634	aR	2/32	850

*Technical data on page 79.

Dimensions:



Size	D	E	F1	F2	M	N
1	51	51	56	90	M8	53
2	60	60	65	99	M10	53
3	75	75	80	114	M12	53

Technical data on page 59

aR

TYPES
M

RATED VOLTAGE
~1000V

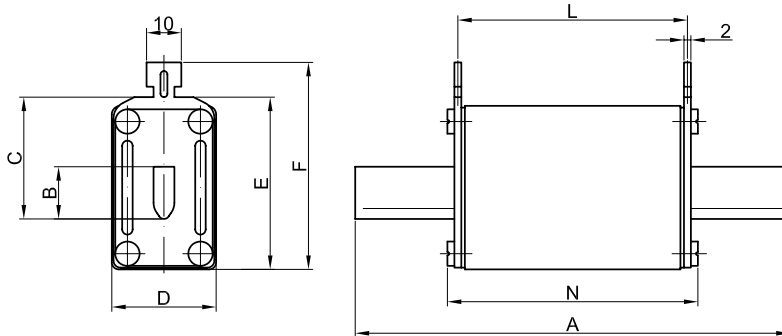
Technical data:			Application:
Standards: IEC 60269-4	Breaking capacity: ~200kA Rated voltage: ~1000V		Fuse-links type M are applied in fuse base (for example PK).

MOUQ1/100A/1000V



Size	In (A)	Type (visual indicator with grip for microswitch NVS 5)	Code No.	Operating I ² t-value (A ² s)	Power dissipation (W)	Char.	Packaging (pcs)	Weight (g)
0	32	MOUQ1/32A/1000V	004362208	480	12,5	aR	3/24	250
	40	MOUQ1/40A/1000V	004362210	840	14,4	aR	3/24	250
	50	MOUQ1/50A/1000V	004362211	1.300	19,3	aR	3/24	250
	63	MOUQ1/63A/1000V	004362212	2.320	22,3	aR	3/24	250
	80	MOUQ1/80A/1000V	004362213	3.900	28,8	aR	3/24	250
	100	MOUQ1/100A/1000V	004362214	8.000	31,5	aR	3/24	250
	125	MOUQ1/125A/1000V	004362215	18.300	34,3	aR	3/24	250
	160	MOUQ1/160A/1000V	004362216	35.300	40,5	aR	3/24	250

Dimensions:



Size	A	B	C	D	E	F	L	N
0	125	15	35	30	50	59,5	66	72

remember

Motor drives: Frequency inverter



Frequency inverter for 3 phase AC motor (lift-elevator)

aR

TYPES
M

RATED VOLTAGE
~1200V

M3UQ2/630A/1200V

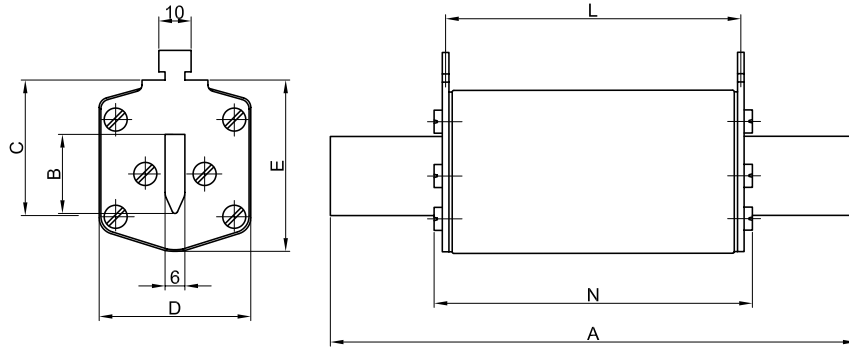


Technical data:		Application:
Standards: IEC 60269-4	Breaking capacity: ~200kA Rated voltage: ~1200V	Fuse-links type M are applied in fuse base (for example U1, U2, U3).

Size	In (A)	Type (visual indicator with a grip for microswitch NVS 5)	Code No.	Operating I ² t-value (A ² s)	Power dissipation (W)	Char.	Packaging (pcs)	Weight (g)
1	80	M1UQ2/80A/1200V	004733213	8.000	35	aR	1/14	700
	100	M1UQ2/100A/1200V	004733214	12.500	45,9	aR	1/14	700
	125	M1UQ2/125A/1200V	004733215	20.000	55	aR	1/14	700
	160	M1UQ2/160A/1200V	004733216	32.000	67	aR	1/14	700
	200	M1UQ2/200A/1200V	004733217	50.000	84	aR	1/14	700
	224	M1UQ2/224A/1200V	004733218	63.000	93	aR	1/14	700
	250	M1UQ2/250A/1200V	004733219	80.000	104	aR	1/14	700
2	315	M2UQ2/315A/1200V	004734221	120.000	125	aR	1/14	1050
	350	M2UQ2/350A/1200V	004734222	160.000	141	aR	1/14	1050
	400	M2UQ2/400A/1200V	004734223	200.000	159	aR	1/14	1050
3	425	M3UQ2/425A/1200V	004734224	230.000	172	aR	1/22	1360
	500	M3UQ2/500A/1200V	004734226	320.000	185	aR	1/22	1360
	630	M3UQ2/630A/1200V	004734228	500.000	198	aR	1/22	1360

Note: for size 1,2 modify hand of NVS5

Dimensions:

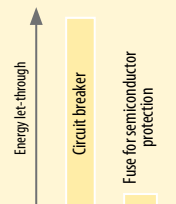


Size	A	B	C	D	E	L	N
1	194	20/24*	40	46	61,5	124	132
2	209	26/30*	48	54	71	124	132
3	209	32/37*	60	64	82	124	132

* The width of the knife is grated in dependence of rating.

remember

For the protection of drives most manufacturers seem to have accepted that circuit breakers despite many advantages are not an option for protection drives. The operational characteristics for circuit breakers are simply too slow, allowing too much energy to pass through.



Technical data on page 63

aR

TYPES
S80mm

RATED VOLTAGE
~1000V

Technical data:		Application:
Standards: IEC 60269-4	Breaking capacity: ~200kA Rated voltage: ~1000V	Fuse-links type S of size 00C and 00 are applied in fuse base US00-1/80 and mounted by screws to busbars.

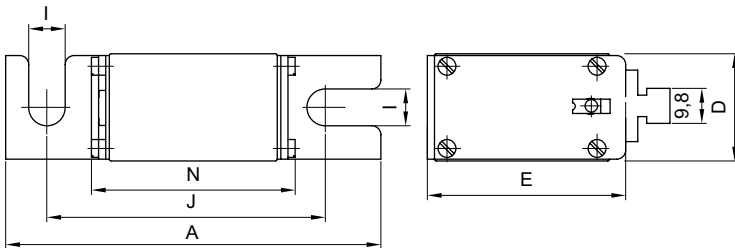
Size	In (A)	Type (visual indicator with grip for microswitch NVS S)	Code No.	Operating I ² t-value (A ² s)	Power dissipation (W)	Char.	Packaging (pcs)	Weight (g)
00	32	S00UQ01/80/32A/1000V	004301108	200	15,1	aR	3/54	250
	40	S00UQ01/80/40A/1000V	004301110	330	18,1	aR	3/54	250
	50	S00UQ01/80/50A/1000V	004301111	670	20	aR	3/54	250
	63	S00UQ01/80/63A/1000V	004301112	1.300	24,3	aR	3/54	250
	80	S00UQ01/80/80A/1000V	004301113	2.400	27,4	aR	3/54	250
	100	S00UQ01/80/100A/1000V	004301114	4.700	30	aR	3/54	250
	125	S00UQ01/80/125A/1000V	004301115	10.000	38,2	aR	3/54	250
	160	S00UQ01/80/160A/1000V	004301116	16.000	47,2	aR	3/54	250
	200	S00UQ01/80/200A/1000V	004301117	30.000	57	aR	3/54	250
	250	S00UQ01/80/250A/1000V	004301119	58.000	67	aR	3/54	250
	315*	S00UQ01/80/315A/900V	004301121	110.000	78	aR	3/54	250

*900V

S00UQ01/80/200A/1000V



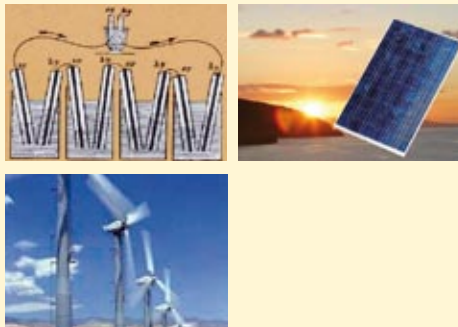
Dimensions:



Size	A	D	E	I	J	N
00	105	30	51	10	78	56

remember

Future applications:
Protection for alternative energy power plant:
- Wind power
- Solar power
- Fuel cell



aR		TYPES S110mm	RATED VOLTAGE ~ 1000V
Technical data:		Application:	
Standards: IEC 60269-4	Breaking capacity: ~200kA Rated voltage: ~1000V	Fuse-links type S 110mm of size 1, 2, 3 are applied in universal fuse base US1..3-1/80-110 and mounted by screws to busbars.	

S1UQ01/110/400A/1000V

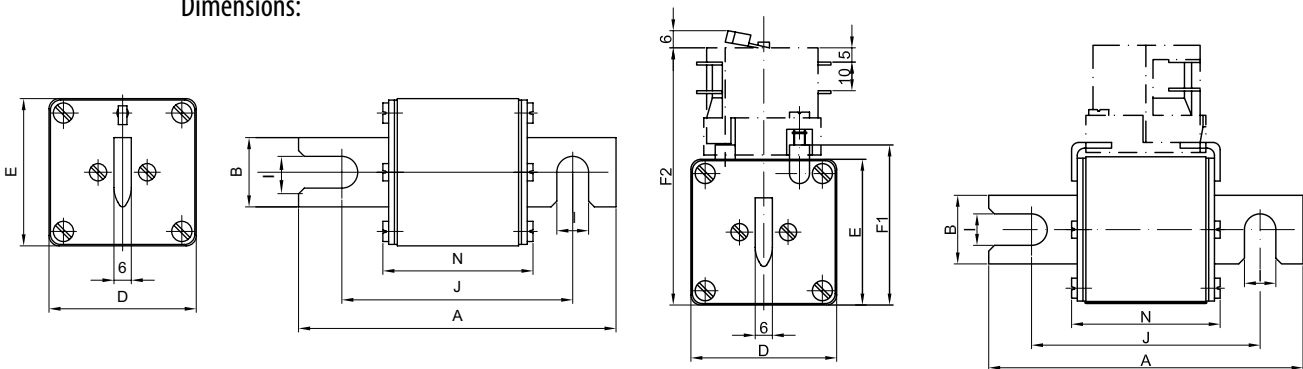


S1MUQ01/110/400A/1000V



In (A)	Type with visual indicator	Code No.	Operating Pt-value (A ² s)	Type with centre trip indicator for microswitch MK	Code No.	Pack. (pcs)	Weight (g)
63	S1UQ01/110/63A/1000V	004303112	2.000	15,1	S1MUQ01/110/63A/1000V	004303712	aR 1/26 500
80	S1UQ01/110/80A/1000V	004303113	3.400	20	S1MUQ01/110/80A/1000V	004303713	aR 1/26 500
100	S1UQ01/110/100A/1000V	004303114	6.100	25	S1MUQ01/110/100A/1000V	004303714	aR 1/26 500
125	S1UQ01/110/125A/1000V	004303115	11.000	30	S1MUQ01/110/125A/1000V	004303715	aR 1/26 500
160	S1UQ01/110/160A/1000V	004303116	17.000	35	S1MUQ01/110/160A/1000V	004303716	aR 1/26 500
200	S1UQ01/110/200A/1000V	004303117	31.000	45,3	S1MUQ01/110/200A/1000V	004303717	aR 1/26 500
250	S1UQ01/110/250A/1000V	004303119	50.000	54	S1MUQ01/110/250A/1000V	004303719	aR 1/26 500
315	S1UQ01/110/315A/1000V	004303121	110.000	60	S1MUQ01/110/315A/1000V	004303721	aR 1/26 500
350	S1UQ01/110/350A/1000V	004303122	150.000	65	S1MUQ01/110/350A/1000V	004303722	aR 1/26 500
400	S1UQ01/110/400A/1000V	004303123	200.000	70	S1MUQ01/110/400A/1000V	004303723	aR 1/26 500
450	S1UQ01/110/450A/1000V	004303125	310.000	74	S1MUQ01/110/450A/1000V	004303725	aR 1/26 500
500	S1UQ01/110/500A/1000V	004303126	400.000	80	S1MUQ01/110/500A/1000V	004303726	aR 1/26 500
315	S2UQ01/110/315A/1000V	004304121	85.000	66	S2MUQ01/110/315A/1000V	004304721	aR 1/16 650
350	S2UQ01/110/350A/1000V	004304122	130.000	70	S2MUQ01/110/350A/1000V	004304722	aR 1/16 650
400	S2UQ01/110/400A/1000V	004304123	170.000	80	S2MUQ01/110/400A/1000V	004304723	aR 1/16 650
450	S2UQ01/110/450A/1000V	004304125	220.000	86	S2MUQ01/110/450A/1000V	004304725	aR 1/16 650
500	S2UQ01/110/500A/1000V	004304126	320.000	90	S2MUQ01/110/500A/1000V	004304726	aR 1/16 650
550	S2UQ01/110/550A/1000V	004304127	450.000	97	S2MUQ01/110/550A/1000V	004304727	aR 1/16 650
630	S2UQ01/110/630A/1000V	004304128	600.000	108	S2MUQ01/110/630A/1000V	004304728	aR 1/16 650
500	S3UQ01/110/500A/1000V	004305126	250.000	100	S3MUQ01/110/500A/1000V	004305726	aR 3/24 850
630	S3UQ01/110/630A/1000V	004305128	500.000	110	S3MUQ01/110/630A/1000V	004305728	aR 3/24 850
710	S3UQ01/110/710A/1000V	004305129	670.000	125	S3MUQ01/110/710A/1000V	004305729	aR 3/24 850
800	S3UQ01/110/800A/1000V	004305130	870.000	136	S3MUQ01/110/800A/1000V	004305730	aR 3/24 850
1000	S3UQ01/110/1000A/1000V	004305132	2.000.000	157	S3MUQ01/110/1000A/1000V	004305732	aR 3/24 850
1250	S3UQ01/110/1250A/1000V	004305134	3.000.000	170	S3MUQ01/110/1250A/1000V	004305734	aR 3/24 850

Dimensions:



Size	A	B	D	E	F1	F2	I	J	N
1	140	24	51	51	56	90	11	110	74
2	140	30	60	60	65	99	11	110	74
3	140	37	75	75	80	114	11	110	74

Technical data on page 63

aR	TYPES	RATED VOLTAGE
	G	~ 1000V

Technical data:		Application:
Standards: IEC 60269-4	Breaking capacity: ~200kA Rated voltage: ~1000V	Fuse-links type G has threaded studs so fuses are mounted by special screws to busbars.

	In (A)	Type with visual indicator	Code No.	Operating P _t -value (A ² s)	Power dissipation (W)	Type with centre trip indicator for microswitch MK	Code No.	Char.	Pack. (pcs)	Weight (g)
1	63	G1UQ01/63A/1000V	004303512	2.000	15,1	G1MUQ01/63A/1000V	004303612	aR	2/32	500
	80	G1UQ01/80A/1000V	004303513	3.400	20	G1MUQ01/80A/1000V	004303613	aR	2/32	500
	100	G1UQ01/100A/1000V	004303514	6.100	25	G1MUQ01/100A/1000V	004303614	aR	2/32	500
	125	G1UQ01/125A/1000V	004303515	11.000	30	G1MUQ01/125A/1000V	004303615	aR	2/32	500
	160	G1UQ01/160A/1000V	004303516	17.000	35	G1MUQ01/160A/1000V	004303616	aR	2/32	500
	200	G1UQ01/200A/1000V	004303517	31.000	45,3	G1MUQ01/200A/1000V	004303617	aR	2/32	500
	250	G1UQ01/250A/1000V	004303519	50.000	54	G1MUQ01/250A/1000V	004303619	aR	2/32	500
	315	G1UQ01/315A/1000V	004303521	110.000	60	G1MUQ01/315A/1000V	004303621	aR	2/32	500
	350	G1UQ01/350A/1000V	004303522	150.000	65	G1MUQ01/350A/1000V	004303622	aR	2/32	500
	400	G1UQ01/400A/1000V	004303523	200.000	70	G1MUQ01/400A/1000V	004303623	aR	2/32	500
	450	G1UQ01/450A/1000V	004303525	310.000	74	G1MUQ01/450A/1000V	004303625	aR	2/32	500
	500	G1UQ01/500A/1000V	004303526	400.000	80	G1MUQ01/500A/1000V	004303626	aR	2/32	500
	315	G2UQ01/315A/1000V	004304521	85.000	66	G2MUQ01/315A/1000V	004304621	aR	2/32	650
350	G2UQ01/350A/1000V	004304522	130.000	70	G2MUQ01/350A/1000V	004304622	aR	2/32	650	
400	G2UQ01/400A/1000V	004304523	170.000	80	G2MUQ01/400A/1000V	004304623	aR	2/32	650	
2	450	G2UQ01/450A/1000V	004304525	220.000	86	G2MUQ01/450A/1000V	004304625	aR	2/32	650
	500	G2UQ01/500A/1000V	004304526	320.000	90	G2MUQ01/500A/1000V	004304626	aR	2/32	650
	550	G2UQ01/550A/1000V	004304527	450.000	100	G2MUQ01/550A/1000V	004304627	aR	2/32	650
	630	G2UQ01/630A/1000V	004304528	600.000	108	G2MUQ01/630A/1000V	004304628	aR	2/32	650
3	500	G3UQ01/500A/1000V	004305526	250.000	100	G3MUQ01/500A/1000V	004305626	aR	2/18	850
	630	G3UQ01/630A/1000V	004305528	500.000	110	G3MUQ01/630A/1000V	004305628	aR	2/18	850
	710	G3UQ01/710A/1000V	004305529	670.000	125	G3MUQ01/710A/1000V	004305629	aR	2/18	850
	800	G3UQ01/800A/1000V	004305530	870.000	136	G3MUQ01/800A/1000V	004305630	aR	2/18	850
	1000	G3UQ01/1000A/1000V	004305532	2.000.000	157	G3MUQ01/1000A/1000V	004305632	aR	2/18	850
	1100	G3UQ01/1100A/1000V	004305533	2.500.000	165	G3MUQ01/1100A/1000V	004305633	aR	2/18	850
	1250	G3UQ01/1250A/1000V	004305534	3.000.000	170	G3MUQ01/1250A/1000V	004305634	aR	2/18	850

G3UQ01/800A/1000V

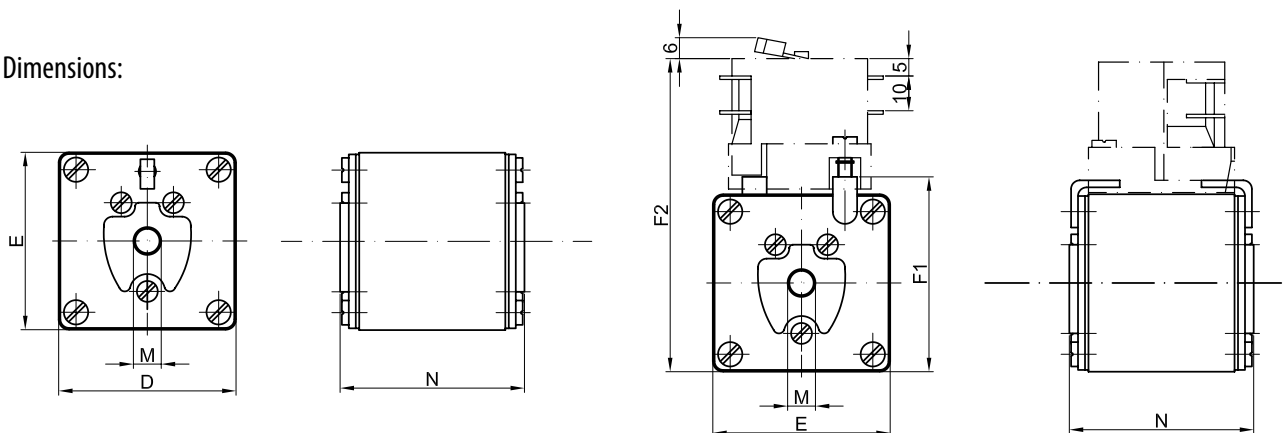


G1MUQ01/400A/1000V



ULTRA QUICK

Dimensions:

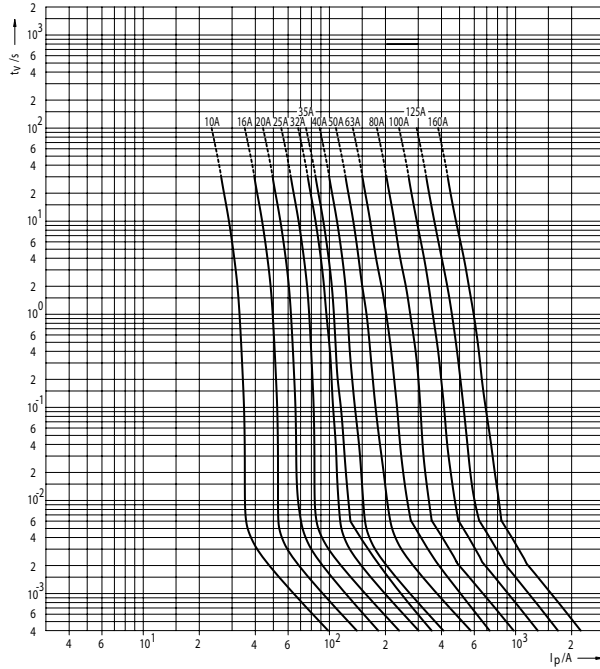


Size	D	E	F1	F2	M	N
1	51	51	56	90	M8	75
2	60	60	65	99	M10	75
3	75	75	80	114	M12	75

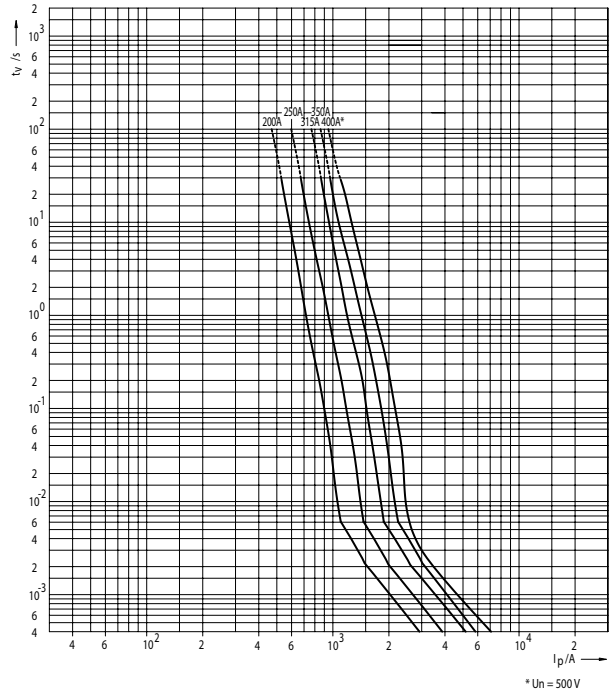
RATED VOLTAGE
~690V

aR

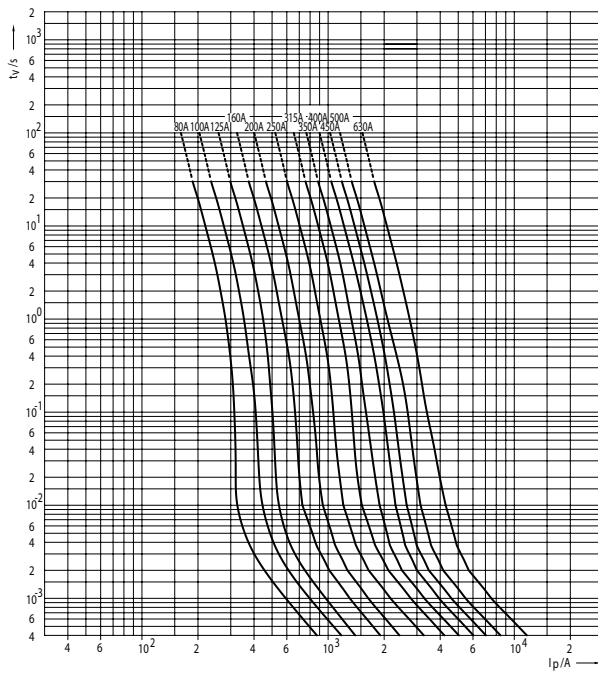
Time/current characteristics of fuse-links Ultra Quick M, S - size 00C and 00, 10-160A



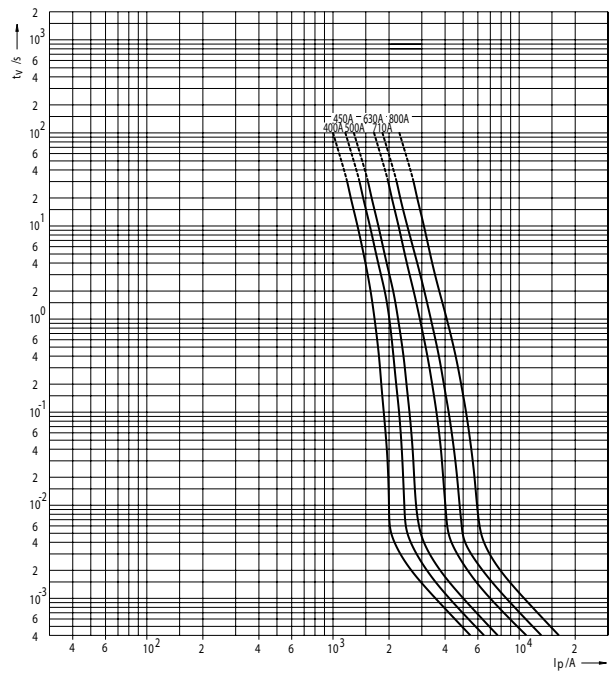
Time/current characteristics of fuse-links Ultra Quick S - size 00C and 00, 200-400A



Time/current characteristics of fuse-links Ultra Quick S, G - size 1



Time/current characteristics of fuse-links Ultra Quick S, G - size 2



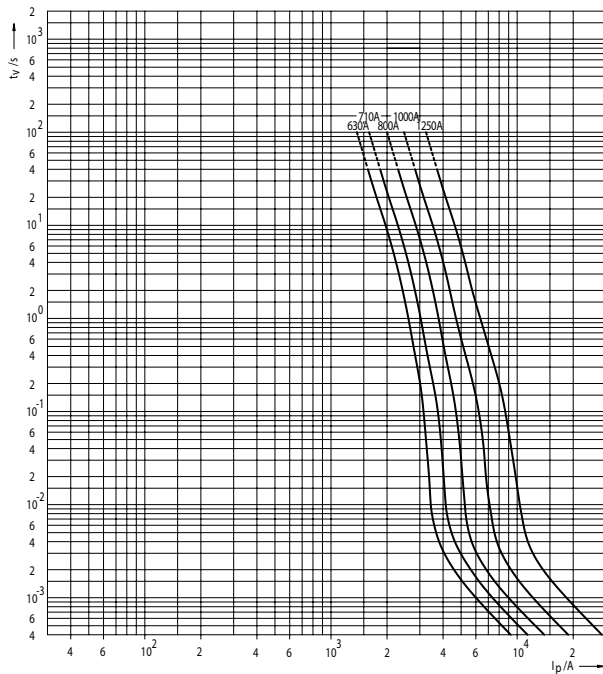
CHARACTERISTICS

SYSTEM NV/NH

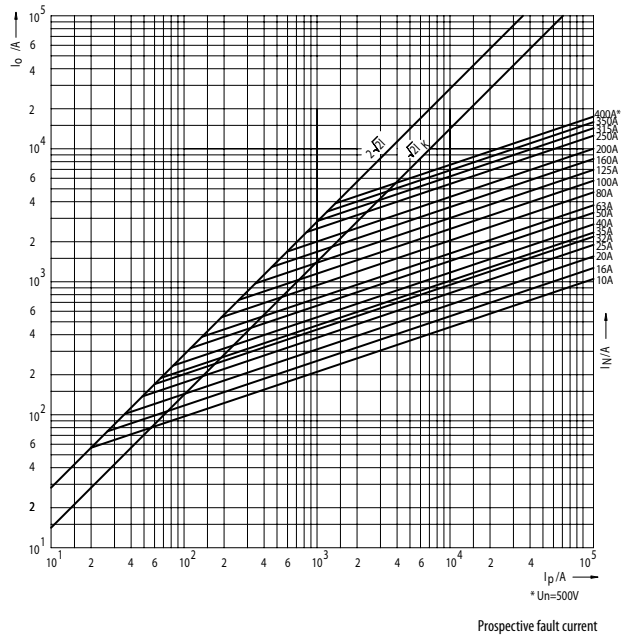
aR

RATED VOLTAGE
~690V

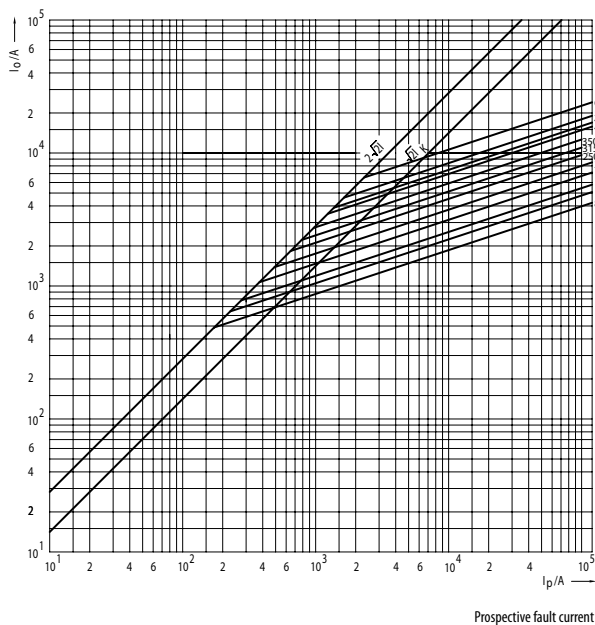
Time/current characteristics of fuse-links Ultra Quick S, G - size 3



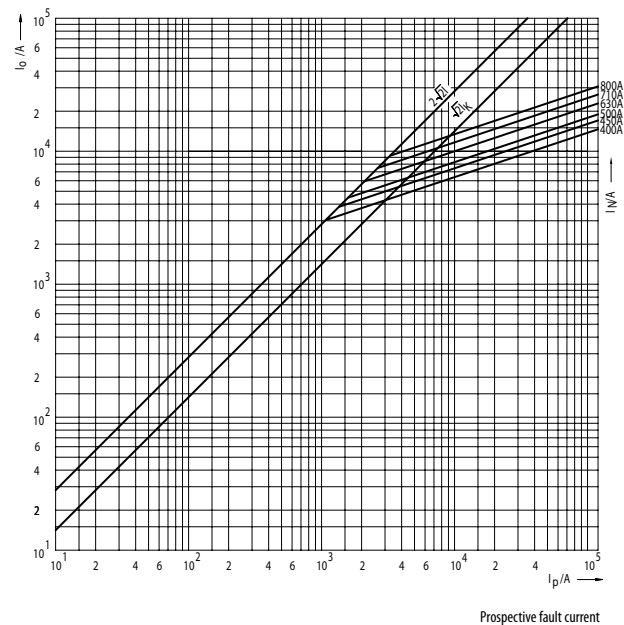
Cut-off characteristics of fuse-links Ultra Quick M and S - size 00C and 00



Cut-off characteristics of fuse-links Ultra Quick S, G - size 1



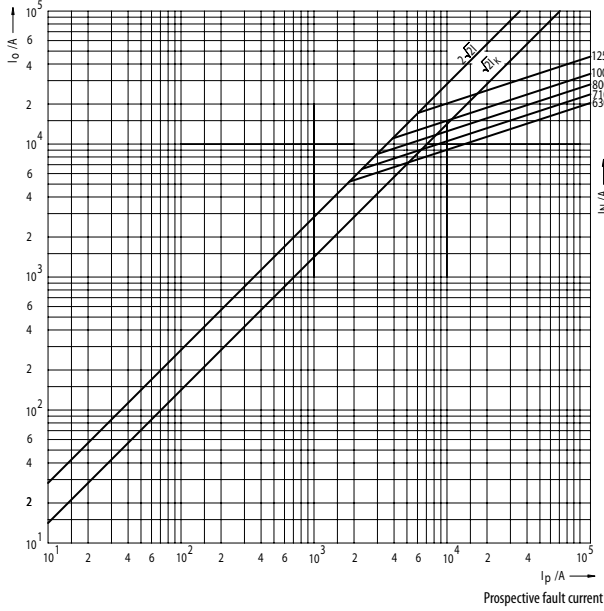
Cut-off characteristics of fuse-links Ultra Quick S, G - size 2



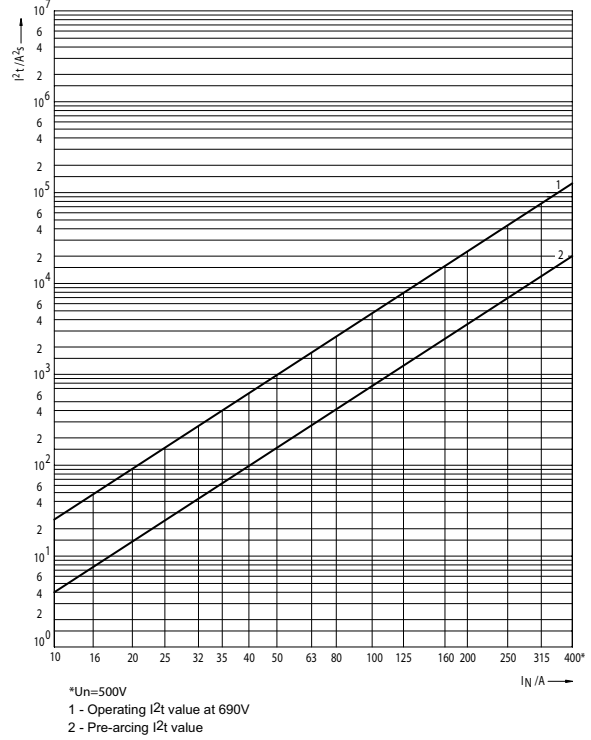
RATED VOLTAGE
~690V

aR

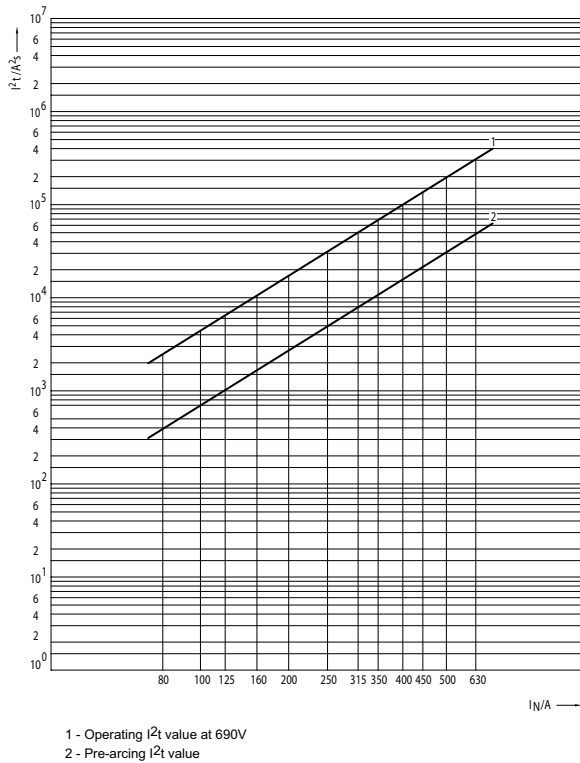
Time/current characteristics of fuse-links Ultra Quick S, G - size 3



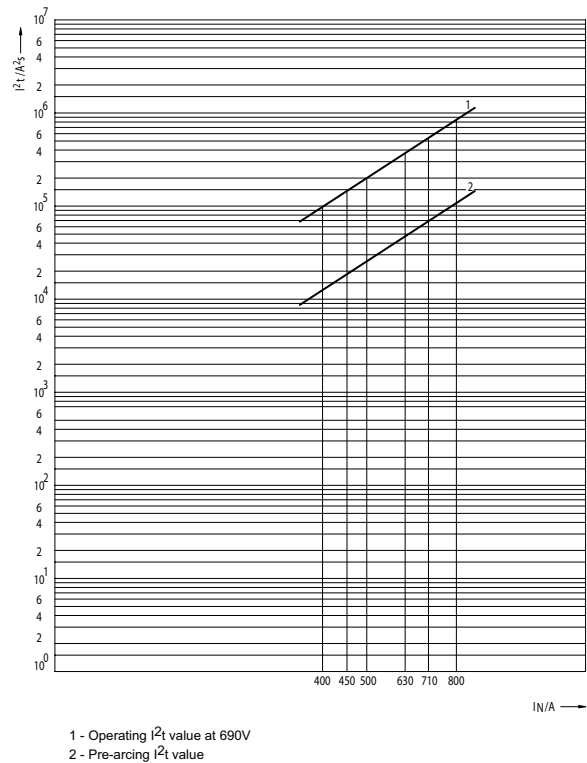
Joule Integral (I^2t) for Ultra Quick M and S - size 00C and 00



Joule Integral (I^2t) for Ultra Quick S, G - size 1



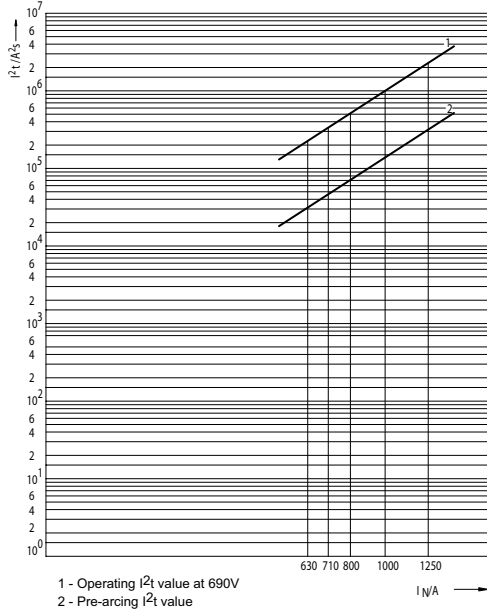
Joule Integral (I^2t) for Ultra Quick S, G - size 2



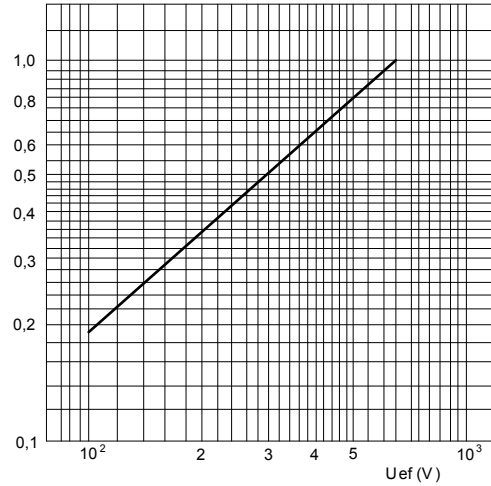
aR

RATED VOLTAGE
~690V

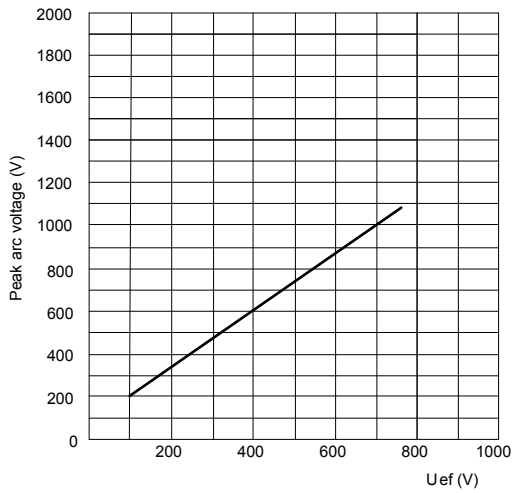
Joule Integral (I^2t) for Ultra Quick S, G - size 3



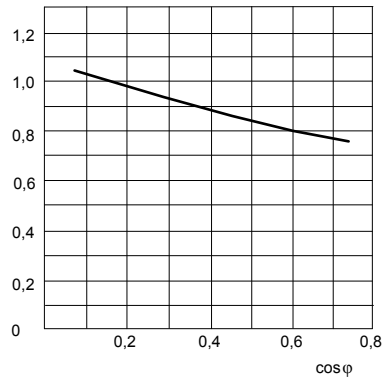
Conversion factor for total Joule integral



Maximum arc voltage occurring



Correction factor for performance factor $\cos\varphi \neq 0,15$ for operating I^2t values



Correction factor for converting the power dissipation for percentage load

Load (%)	Correction factor
10	0,005
20	0,025
30	0,063
40	0,122
50	0,204
60	0,31
70	0,442
80	0,6
90	0,785
100	1

RATED VOLTAGE
~690V

aR

Power dissipation, pre-arcing Joule Integral and Operating Joule Integral for Ultra Quick

Size	I _n	Power dissipation	Pre-arcing	Operating	Operating	Operating	Operating
			Joule integral I ² t (1ms)	Joule Integral I ² t ~230V	Joule Integral I ² t ~400V	Joule Integral I ² t ~500V	Joule Integral I ² t ~690V
	A	W	A ² s	A ² s	A ² s	A ² s	A ² s
M00, S00C and S00	10	3,00	3	4	9	14	23
	16	4,00	8	18	28	37	46
	20	5,00	16	38	57	76	95
	25	6,00	26	66	99	132	165
	32	7,00	46	116	174	232	290
	35	8,00	64	160	240	320	400
	40	9,00	110	256	384	512	640
	50	10,00	165	400	600	800	1.000
	63	12,3	300	720	1.080	1.440	1.800
	80	16,3	440	1.120	1.680	2.240	2.800
	100	20,0	800	1.840	2.760	3.680	4.600
	125	26,9	1.400	3.200	4.800	6.400	8.000
	160	31,6	2.500	6.600	9.900	13.200	16.500
	200	38,7	4.000	9.200	13.800	18.400	23.000
	250	43,8	8.000	18.400	27.600	36.800	46.000
	315	54	14.000	32.000	48.000	64.000	80.000
350	60	15.000	40.000	60.000	80.000	100.000	
400*	70	20.000	65.000	104.000	130.000	120.000	
S1, G1	80	15,6	400	920	1.380	1.840	2.300
	100	20,0	660	1.840	2.760	3.680	4.600
	125	25,0	1.000	2.640	3.960	5.280	6.600
	160	32,2	1.650	4.000	6.000	8.000	10.000
	200	39,4	2.800	7.200	10.800	14.400	18.000
	250	49,4	4.600	12.800	19.200	25.600	32.000
	315	60	8.000	23.200	34.800	46.400	58.000
	350	63	11.000	31.200	46.800	62.400	78.000
	400	66	16.000	44.000	66.000	88.000	110.000
	450	72	22.000	62.000	93.000	124.000	155.000
S2, G2	500	73	32.000	80.000	120.000	160.000	200.000
	630	86	52.000	132.000	198.000	264.000	330.000
	400	70	11.000	34.000	51.000	68.000	85.000
	450	76	16.500	50.000	75.000	100.000	125.000
	500	80	22.000	66.000	99.000	132.000	165.000
	630	85	44.000	124.000	186.000	248.000	310.000
	710	91	64.000	184.000	276.000	368.000	460.000
	800	95	100.000	288.000	432.000	576.000	720.000
S3, G3	630	102	33.000	104.000	156.000	208.000	260.000
	710	109	46.000	132.000	198.000	264.000	330.000
	800	117	78.000	200.000	300.000	400.000	500.000
	1000	131	150.000	400.000	600.000	800.000	1.000.000
1250	152	320.000	920.000	1.380.000	1.840.000	2.300.000	

* Un = 500V

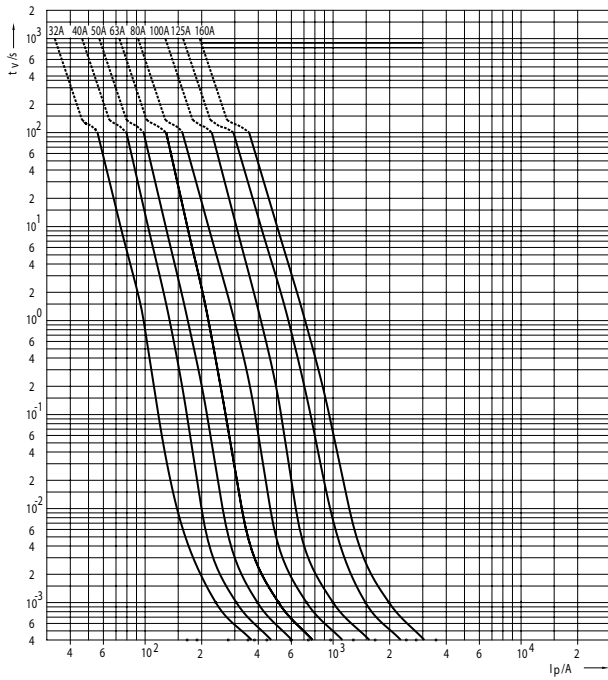
CHARACTERISTICS

SYSTEM NV/NH

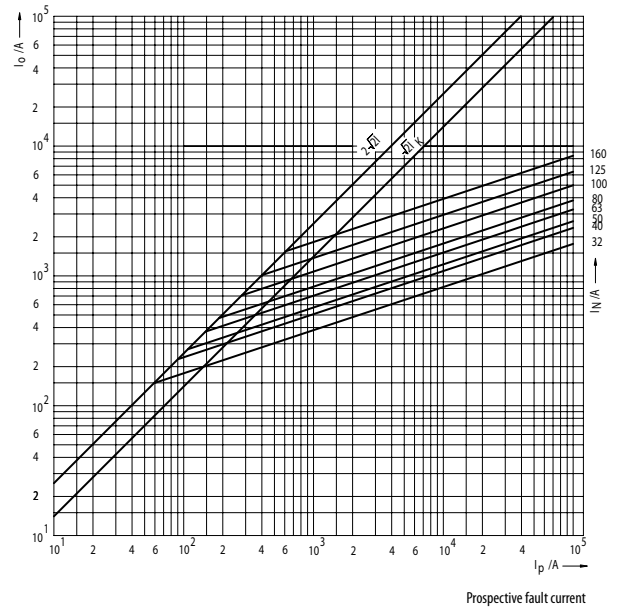
aR

RATED VOLTAGE
~ 1000V

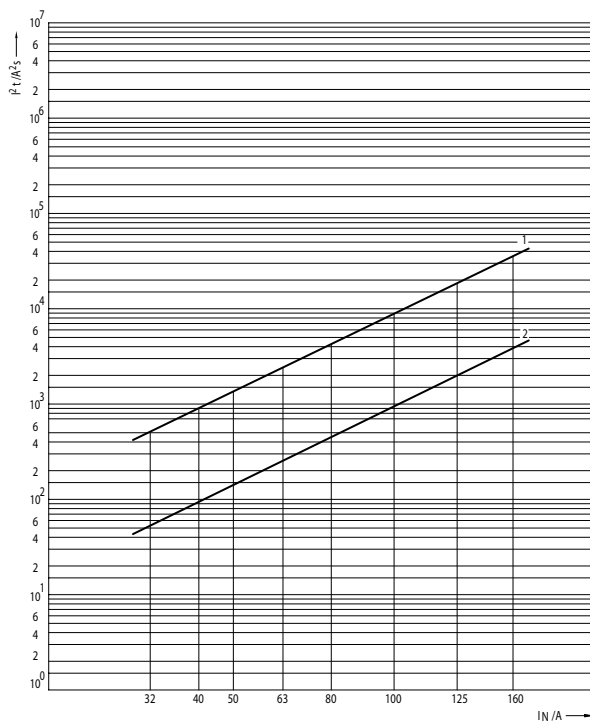
Time/current characteristics of fuse-links Ultra Quick M - size 0



Cut-off characteristics of fuse-links Ultra Quick M - size 0



Joule Integral (I^2t) for Ultra Quick MUQ1 - size 0

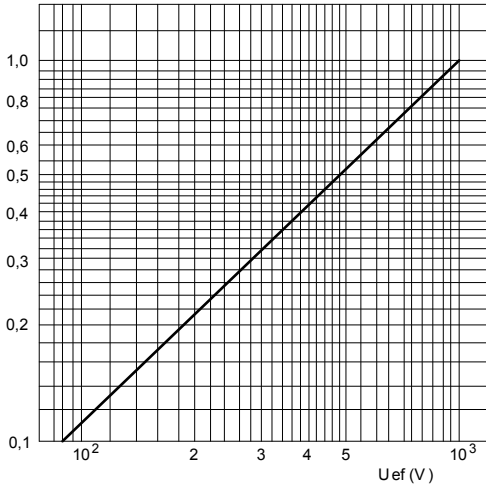


- 1 - Operating I²t value at 1000V
- 2 - Pre-arcing I²t value

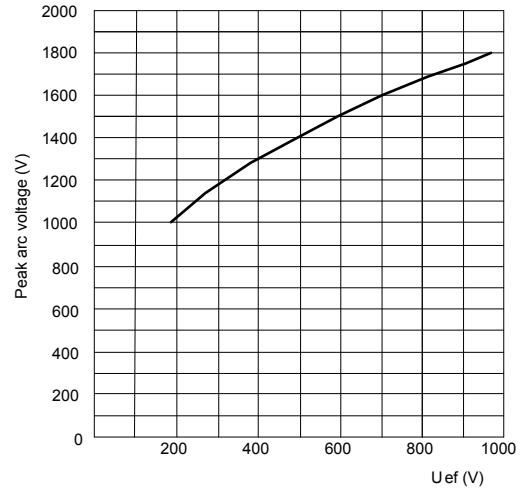
RATED VOLTAGE
~1000V

aR

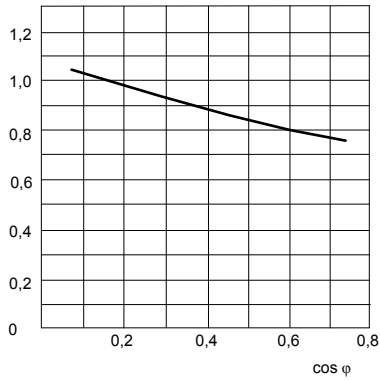
Conversion factor for total Joule integral Size 0



Maximum arc voltage accuring



Correction factor for performance factor $\cos\varphi \neq 0,15$ for operating I^2t values



Correction factor for converting the power dissipation for percentage load

Load(%)	Correction factor
10	0,005
20	0,025
30	0,063
40	0,122
50	0,204
60	0,31
70	0,442
80	0,6
90	0,785
100	1

Power dissipation, pre-arcing Joule Integral and Operating Joule Integral for Ultra Quick

Size	I_N	Power dissipation	Pre-arcing Joule integral I^2t (1ms)	Operating Joule Integral $I^2t \sim 230V$	Operating Joule Integral $I^2t \sim 400V$	Operating Joule Integral $I^2t \sim 500V$	Operating Joule Integral $I^2t \sim 690V$	Operating Joule Integral $I^2t \sim 1000V$
	A	W	A ² s	A ² s	A ² s	A ² s	A ² s	A ² s
M0	32	12,5	51	140	210	255	350	480
	40	14,4	90	250	370	450	610	840
	50	19,3	140	380	570	700	950	1.300
	63	22,3	250	680	1.000	1.250	1.700	2.320
	80	28,8	420	1.150	1.700	2.100	2.850	3.900
	100	31,5	860	2.350	3.500	4.300	5.850	8.000
	125	34,3	1.970	5.380	8.000	9.800	13.400	18.300
	160	40,5	3.800	10.380	15.400	18.900	25.800	35.300

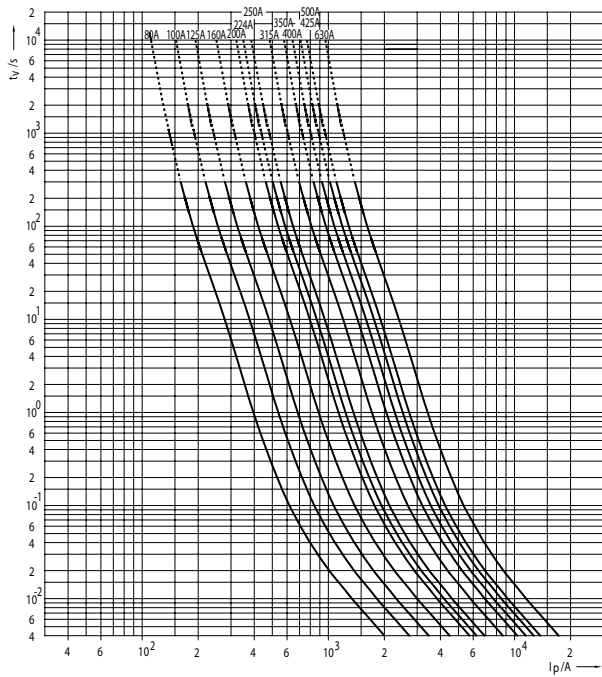
CHARACTERISTICS

SYSTEM NV/NH

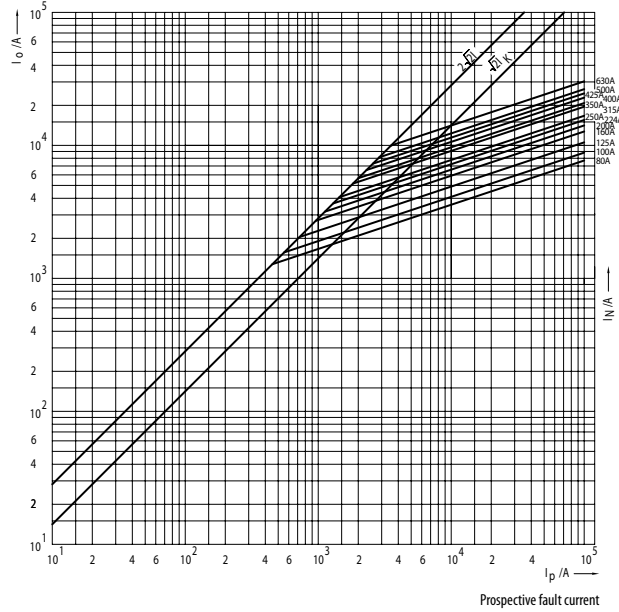
aR

RATED VOLTAGE
~1200V

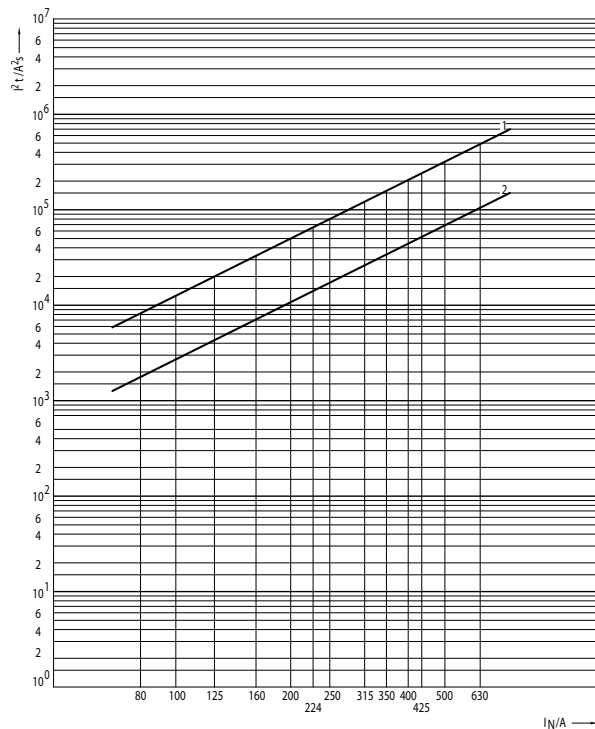
Time/current characteristics of fuse-links Ultra Quick M - size 1, 2, 3



Cut-off characteristics of fuse-links Ultra Quick M - size 1, 2, 3



Joule Integral (I^2t) for Ultra Quick M - size 1, 2, 3

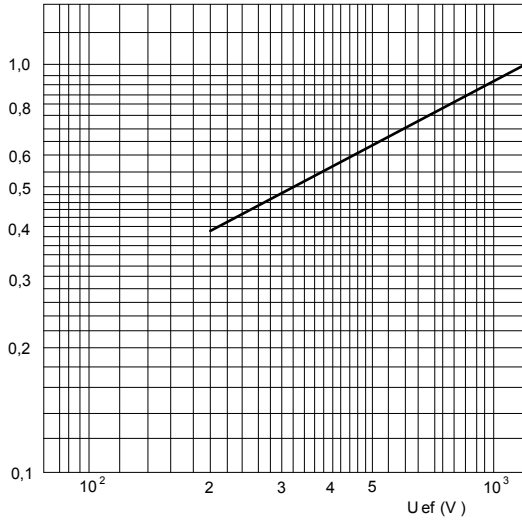


1 - Operating I^2t value at 1200V
2 - Pre-arcing I^2t value

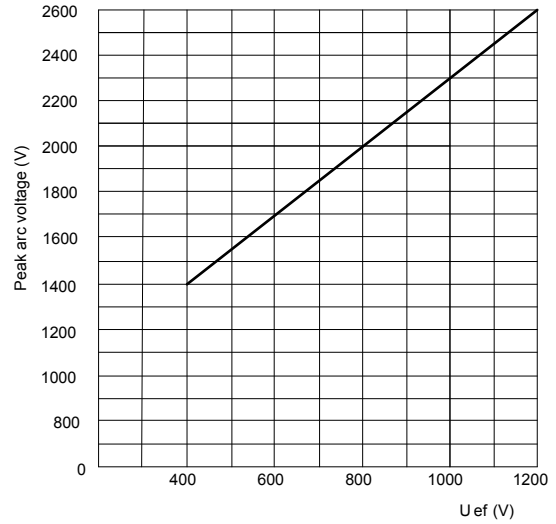
RATED VOLTAGE
~1200V

aR

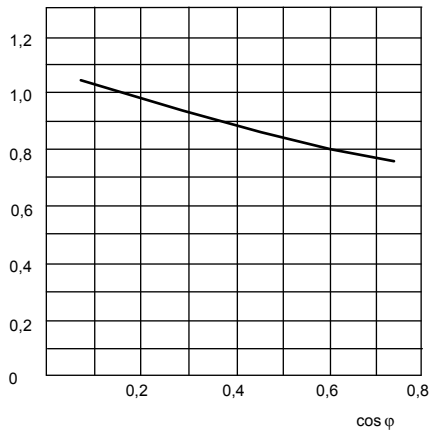
Conversion factor for total Joule integral



Maximum arc voltage occurring



Correction factor for performance factor $\cos\varphi \neq 0,15$ for operating I^2t values



Correction factor for converting the power dissipation for percentage load

Load(%)	Correction factor
10	0,005
20	0,025
30	0,063
40	0,122
50	0,204
60	0,31
70	0,442
80	0,6
90	0,785
100	1

Power dissipation, pre-arcing Joule Integral and Operating Joule Integral for Ultra Quick

Size	I_N	Power dissipation	Pre-arcing	Operating	Operating	Operating	Operating	Operating	Operating
			Joule integral I^2t (1ms)	Joule Integral $I^2t \sim 230V$	Joule Integral $I^2t \sim 400V$	Joule Integral $I^2t \sim 500V$	Joule Integral $I^2t \sim 690V$	Joule Integral $I^2t \sim 1000V$	Joule Integral $I^2t \sim 1200V$
	A	W	A ² s	A ² s	A ² s	A ² s	A ² s	A ² s	A ² s
M1, M2, M3	80	35,0	1.650	3.440	4.240	5.200	6.000	7.200	8.000
	100	45,9	2.500	5.375	6.625	8.125	9.375	11.250	12.500
	125	55	4.200	8.600	10.600	13.000	15.000	18.000	20.000
	160	67	7.000	13.760	16.960	20.800	24.000	28.800	32.000
	200	84	11.000	21.500	26.500	32.500	37.500	45.000	50.000
	224	93	15.000	27.090	33.390	40.950	47.250	56.700	63.000
	250	104	17.000	34.400	42.400	52.000	60.000	72.000	80.000
	315	125	25.000	51.600	63.600	78.000	90.000	108.000	120.000
	350	141	32.000	68.800	84.800	104.000	120.000	144.000	160.000
	400	159	42.000	86.000	106.000	130.000	150.000	180.000	200.000
	425	172	58.000	98.900	121.900	149.500	172.500	207.000	230.000
	500	185	77.000	137.600	169.600	208.000	240.000	288.000	320.000
	630	198	110.000	215.000	265.000	325.000	375.000	450.000	500.000

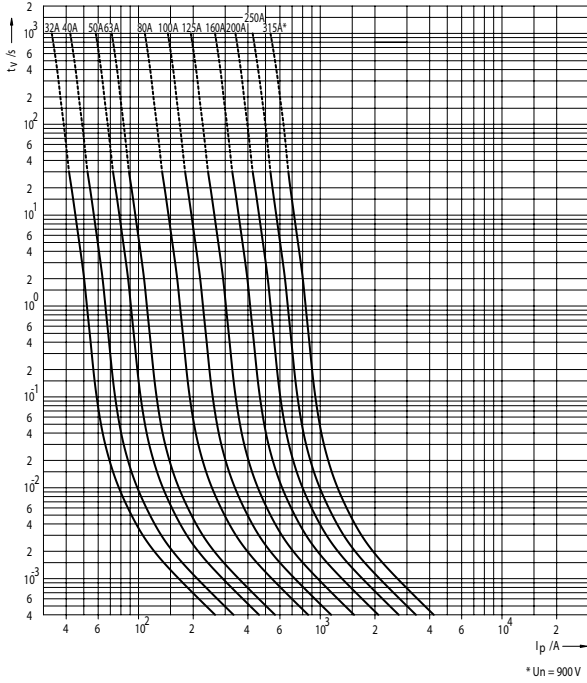
CHARACTERISTICS

SYSTEM NV/NH

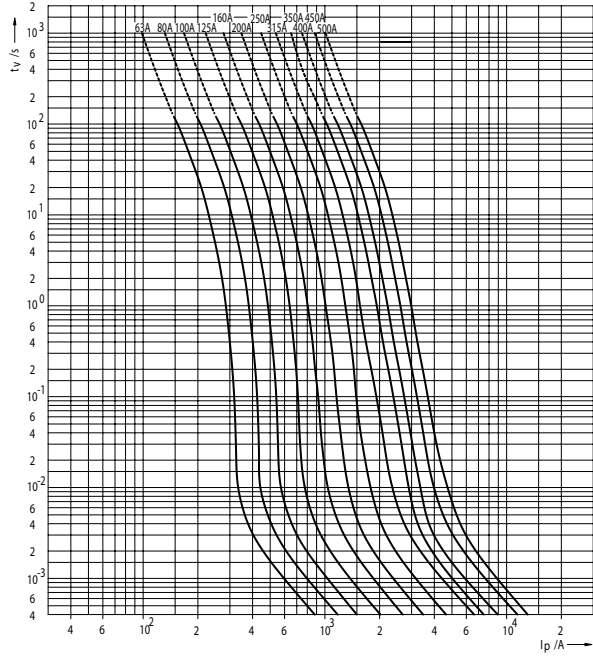
aR

RATED VOLTAGE
~1000V

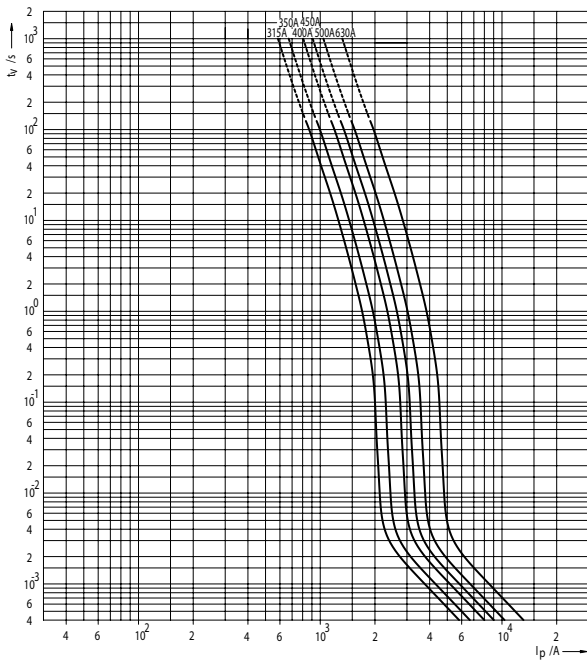
Time/current characteristics of fuse-links Ultra Quick S - size 00



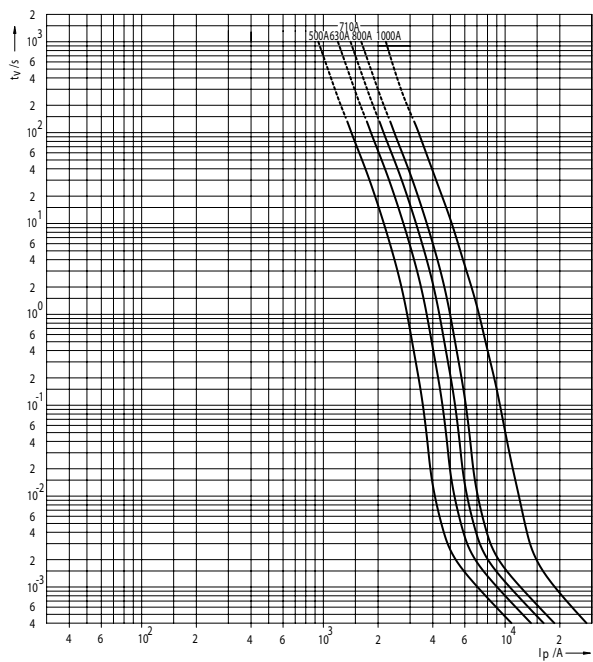
Time/current characteristics of fuse-links Ultra Quick S, G - size 1



Time/current characteristics of fuse-links Ultra Quick S, G - size 2



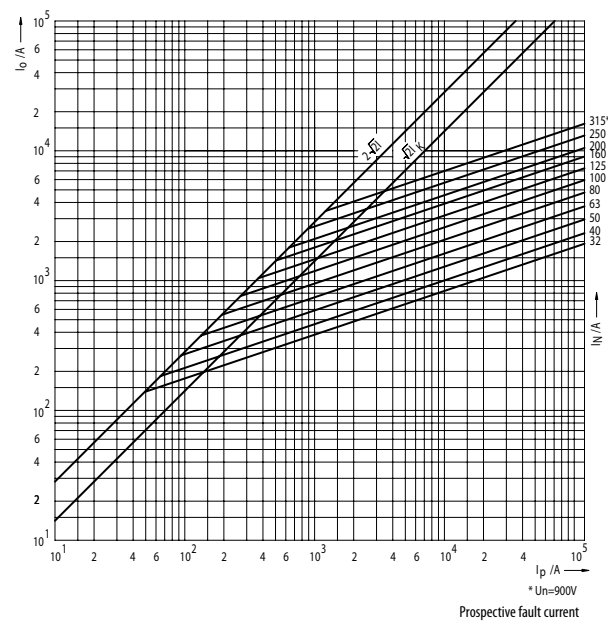
Time/current characteristics of fuse-links Ultra Quick S, G - size 3



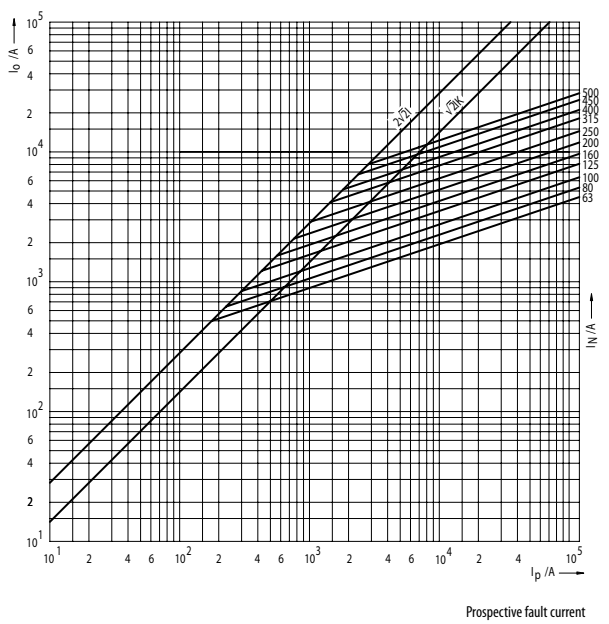
RATED VOLTAGE
~1000V

aR

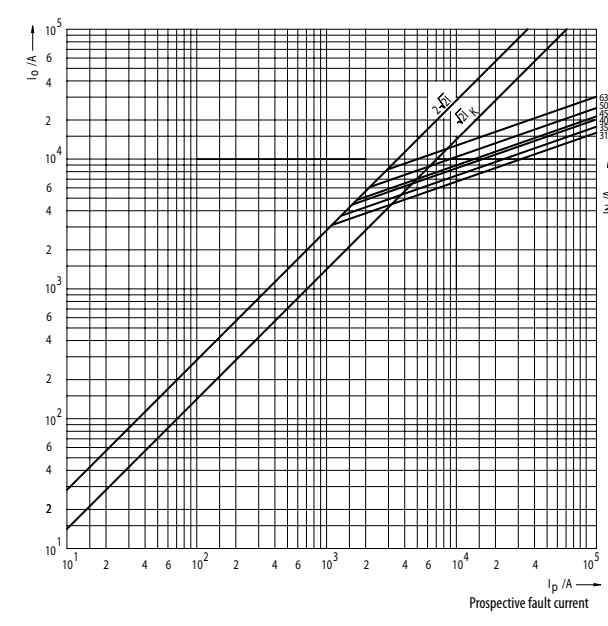
Cut-off characteristics of fuse-links Ultra Quick S - size 00



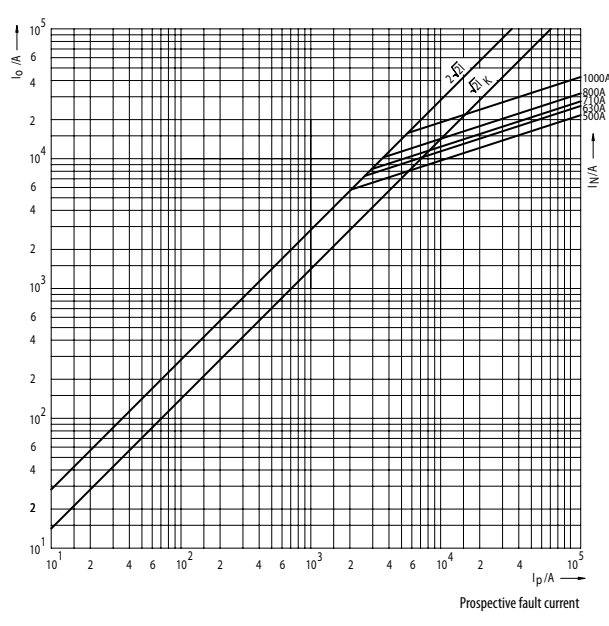
Cut-off characteristics of fuse-links Ultra Quick S, G - size 1



Cut-off characteristics of fuse-links Ultra Quick S, G - size 2



Cut-off characteristics of fuse-links Ultra Quick S, G - size 3



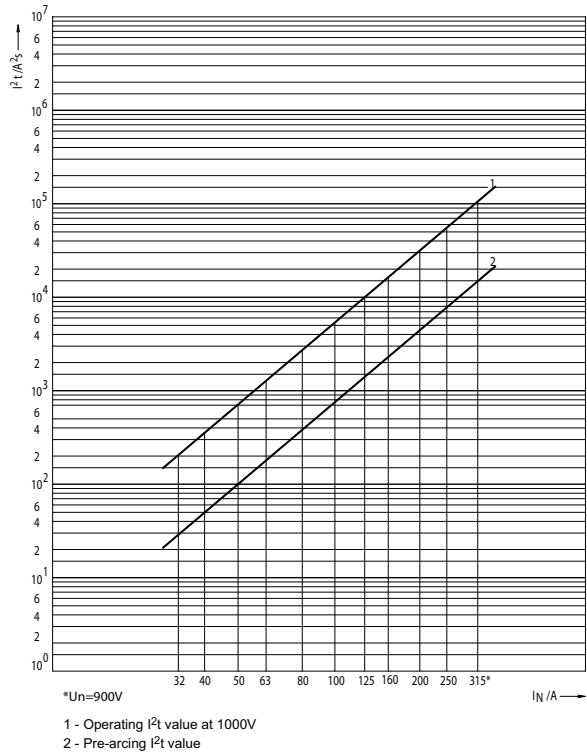
CHARACTERISTICS

SYSTEM NV/NH

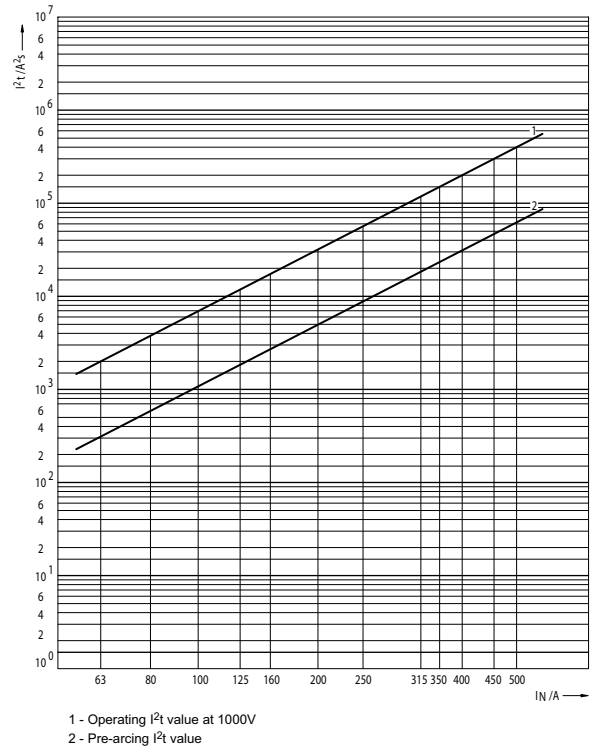
aR

RATED VOLTAGE
~1000V

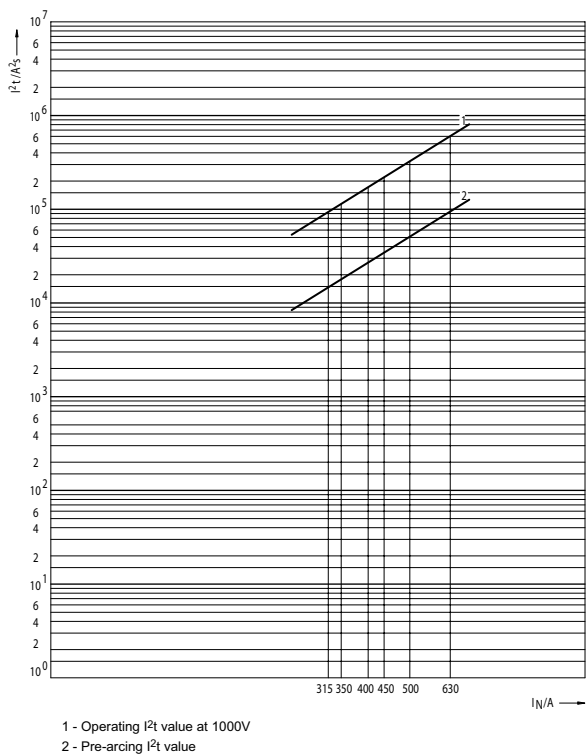
Joule Integral (I^2t) for Ultra Quick S - size 00



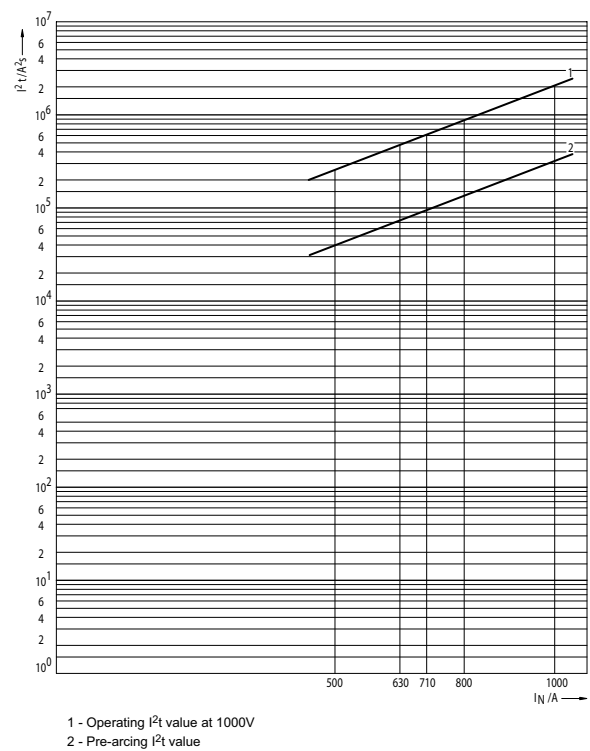
Joule Integral (I^2t) for Ultra Quick S, G - size 1



Joule Integral (I^2t) for Ultra Quick S, G - size 2



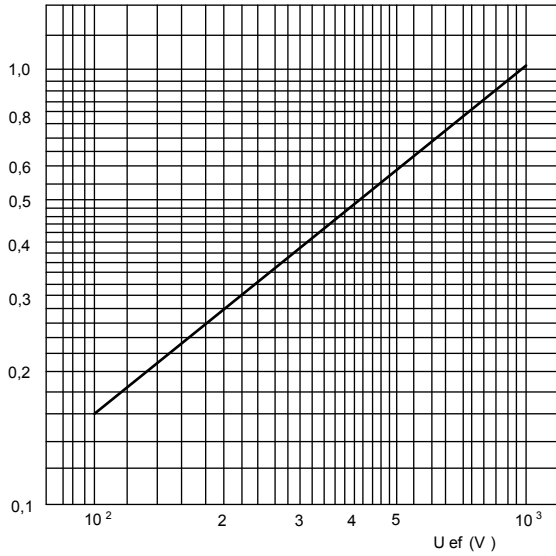
Joule Integral (I^2t) for Ultra Quick S, G - size 3



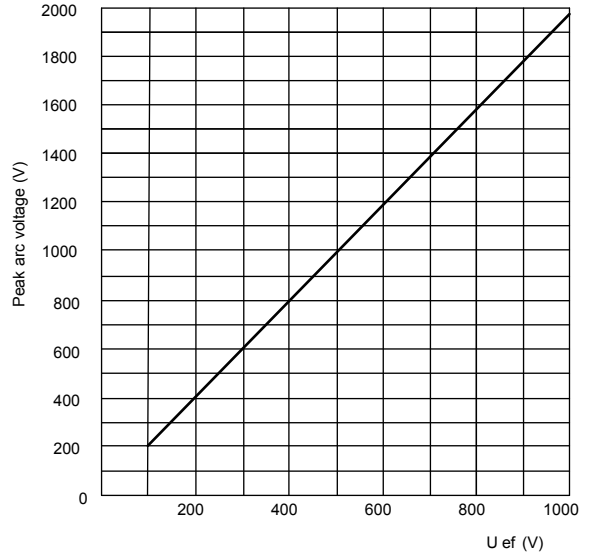
RATED VOLTAGE
~1000V

aR

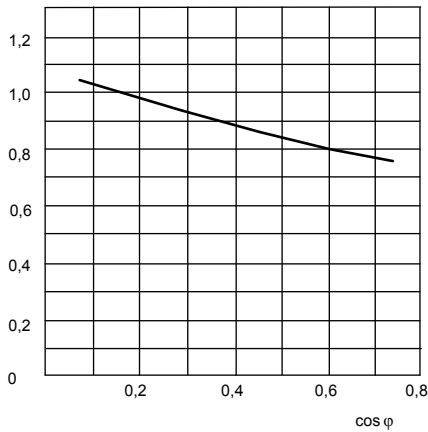
Conversion factor for total Joule integral



Maximum arc voltage occurring



Correction factor for performance factor $\cos\varphi \neq 0,15$ for operating I^2t values



Correction factor for converting the power dissipation for percentage load

Load (%)	Correction factor
10	0,005
20	0,025
30	0,063
40	0,122
50	0,204
60	0,31
70	0,442
80	0,6
90	0,785
100	1

CHARACTERISTICS

SYSTEM NV/NH

aR

RATED VOLTAGE
~ 1000V

Power dissipation, pre-arcing Joule Integral and Operating Joule Integral for Ultra Quick

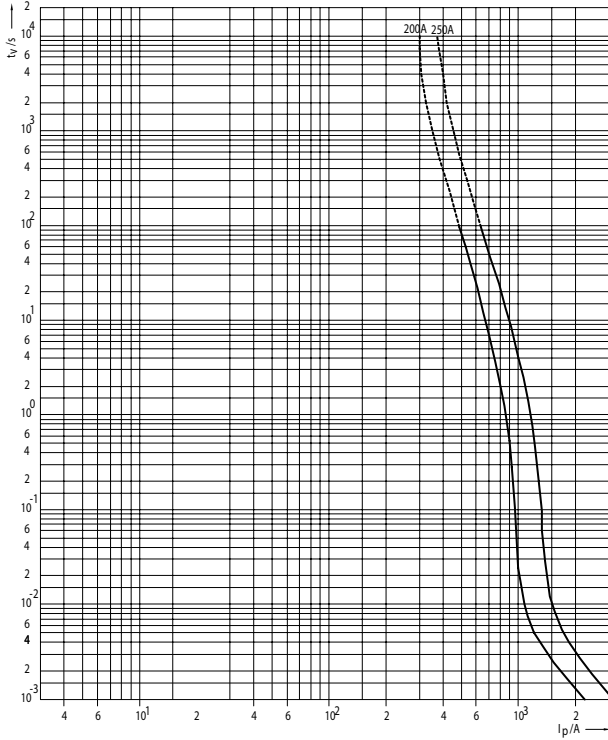
Size	I _N	Power dissipation	Pre-arcing Joule integral I ² t (1ms)	Operating Joule Integral I ² t ~230V	Operating Joule Integral I ² t ~400V	Operating Joule Integral I ² t ~500V	Operating Joule Integral I ² t ~690V	Operating Joule Integral I ² t ~1000V
	A	W	A ² s	A ² s	A ² s	A ² s	A ² s	A ² s
S00	32	15,1	26	63	98	116	150	200
	40	18,1	45	104	162	191	248	330
	50	20,0	100	211	328	389	503	670
	63	24,3	165	410	637	754	975	1.300
	80	27,4	330	756	1.176	1.392	1.800	2.400
	100	30,0	660	1.481	2.303	2.726	3.525	4.700
	125	38,2	1.500	3.150	4.900	5.800	7.500	10.000
	160	47,2	2.100	5.040	7.840	9.280	12.000	16.000
	200	57	4.000	9.450	14.700	17.400	22.500	30.000
	250	67	8.000	18.270	28.420	33.640	43.500	58.000
315*	78	15.000	34.650	53.900	63.800	82.500	110.000	
S1, G1	63	15,1	300	630	980	1.160	1.500	2.000
	80	20,0	600	1.071	1.666	1.972	2.550	3.400
	100	25,0	1.000	1.922	2.989	3.538	4.575	6.100
	125	30,0	1.650	3.465	5.390	6.380	8.250	11.000
	160	35,0	2.700	5.355	8.330	9.860	12.750	17.000
	200	45,3	4.800	9.765	15.190	17.980	23.250	31.000
	250	54	8.000	15.750	24.500	29.000	37.500	50.000
	315	60	16.500	34.650	53.900	63.800	82.500	110.000
	350	65	21.000	47.250	73.500	87.000	112.500	150.000
	400	70	32.000	63.000	98.000	116.000	150.000	200.000
450	74	46.000	97.650	151.900	179.800	232.500	310.000	
500	80	64.000	126.000	196.000	232.000	300.000	400.000	
S2, G2	315	66	15.000	26.775	41.650	49.300	63.750	85.000
	350	70	18.000	40.950	63.700	75.400	97.500	130.000
	400	80	28.000	53.550	83.300	98.600	127.500	170.000
	450	86	33.000	69.300	107.800	127.600	165.000	220.000
	500	90	55.000	100.800	156.800	185.600	240.000	320.000
S3, G3	630	108	100.000	189.000	294.000	348.000	450.000	600.000
	500	100	41.000	78.750	122.500	145.000	187.500	250.000
	630	110	80.000	157.500	245.000	290.000	375.000	500.000
	710	125	100.000	211.050	328.300	388.600	502.500	670.000
	800	136	150.000	274.050	426.300	504.600	652.500	870.000
1000	157	310.000	630.000	980.000	1.160.000	1.500.000	2.000.000	

* Un = 900V

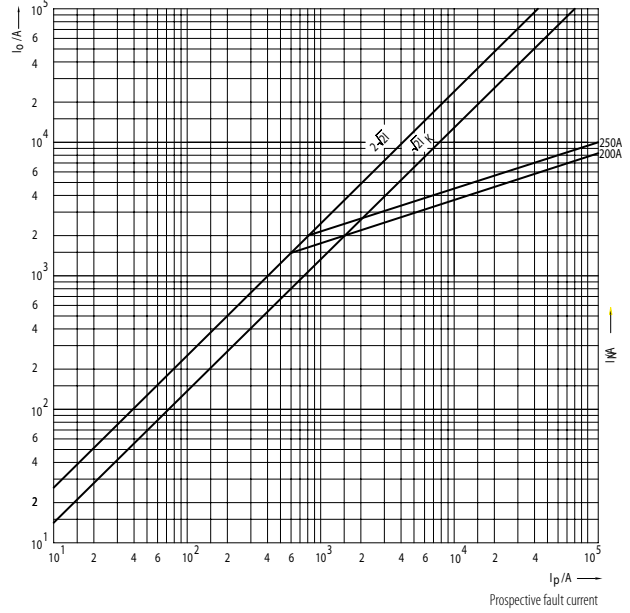
RATED VOLTAGE
~690V

aR

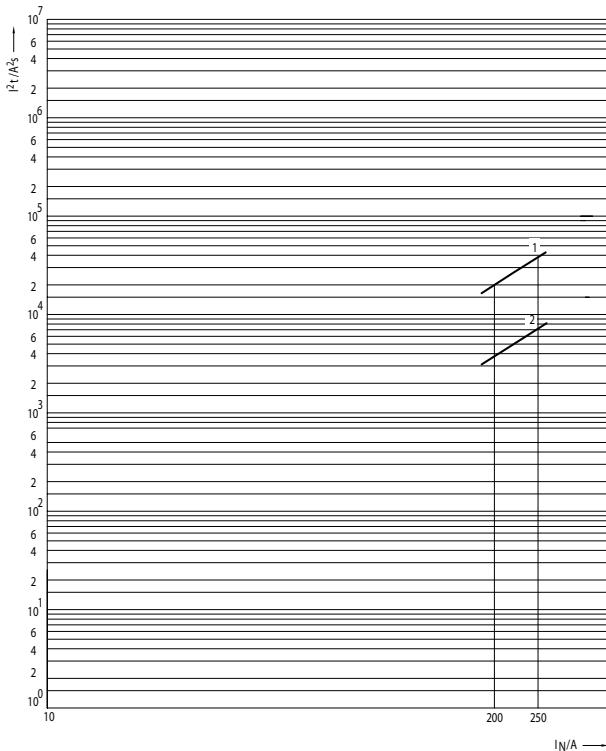
Time/current characteristics of fuse-links Ultra quick MUQ02 – size 00



Cut-off characteristics of fuse – links Ultra Quick MUQ02 – size 00



Joule integral (I²t) for Ultra Quick MUQ02 – size 00

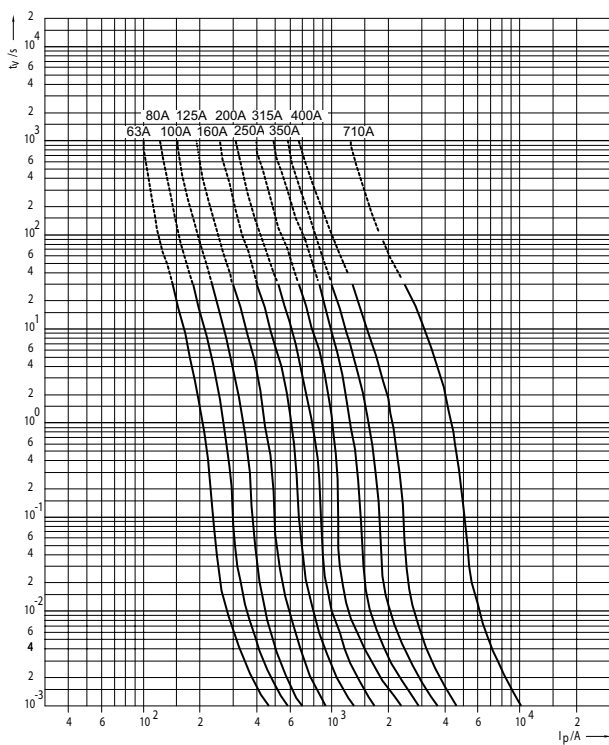


1 - Operating I²t value at 690V
2 - Pre-arcing I²t value

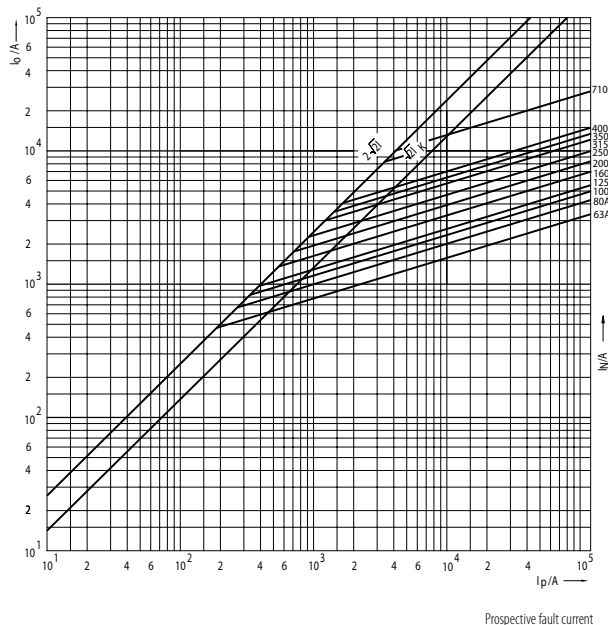
aR

RATED VOLTAGE
~690V

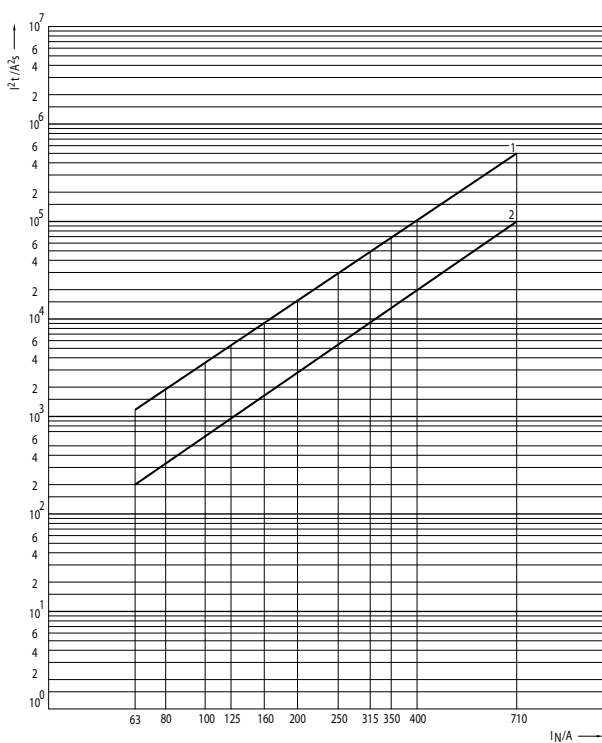
Time/current characteristics of fuse-links Ultra quick MUQ02, SUQ02, GUQ02 – size 1



Cut-off characteristics of fuse – links Ultra Quick MUQ02, SUQ02, GUQ02 – size 1



Joule integral (I^2t) for Ultra Quick MUQ02, SUQ02, GUQ02 – size 1

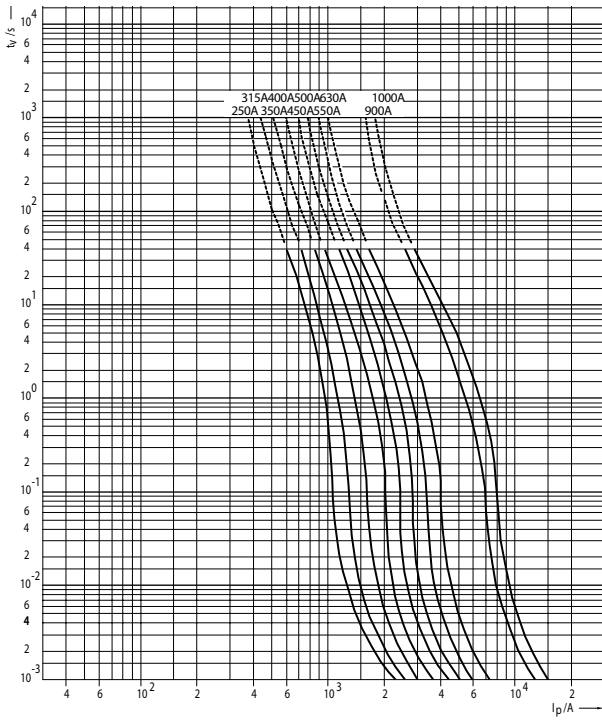


1 - Operating I^2t value at 690V
2 - Pre-arcing I^2t value

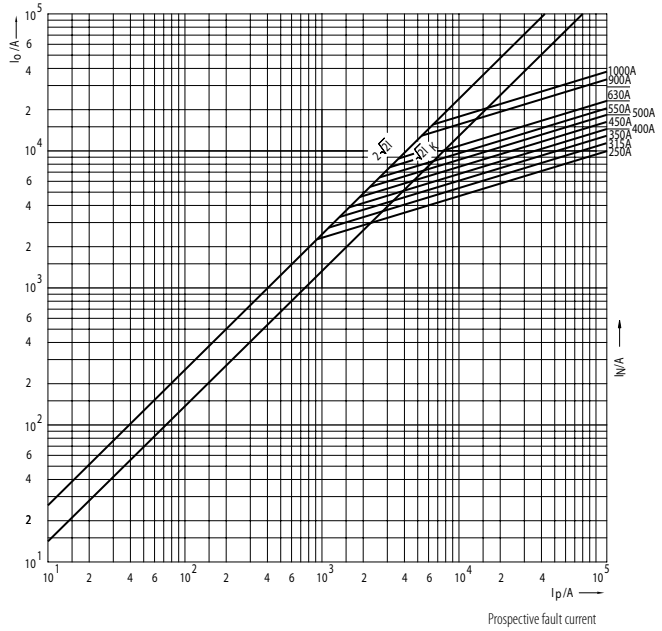
RATED VOLTAGE
~690V

aR

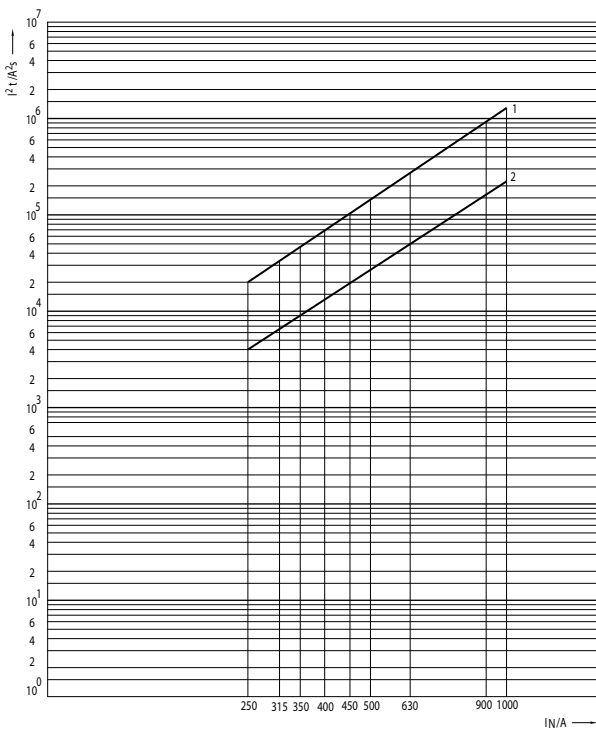
Time/current characteristics of fuse-links Ultra quick MUQ02, SUQ02, GUQ02 – size 2



Cut-off characteristics of fuse – links Ultra Quick MUQ02, SUQ02, GUQ02 – size 2



Joule integral (I^2t) for Ultra Quick MUQ02, SUQ02, GUQ02 – size 2

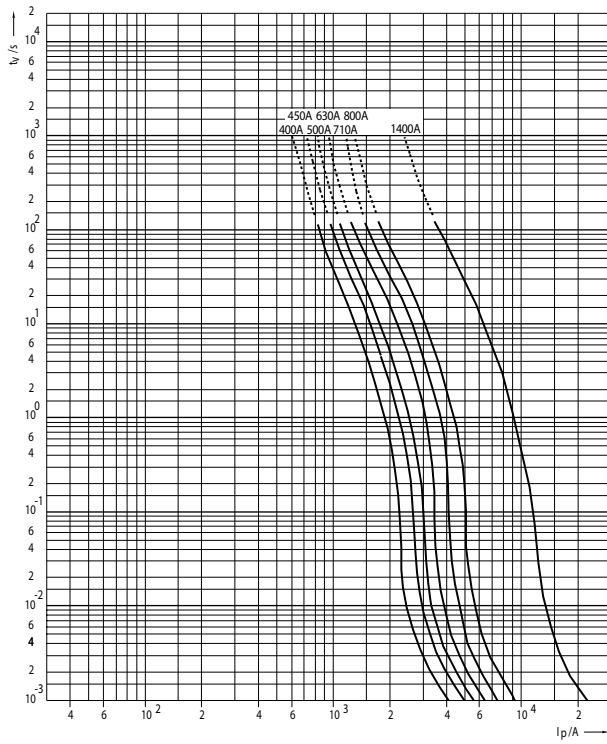


1 - Operating I^2t value at 690V
2 - Pre-arcing I^2t value

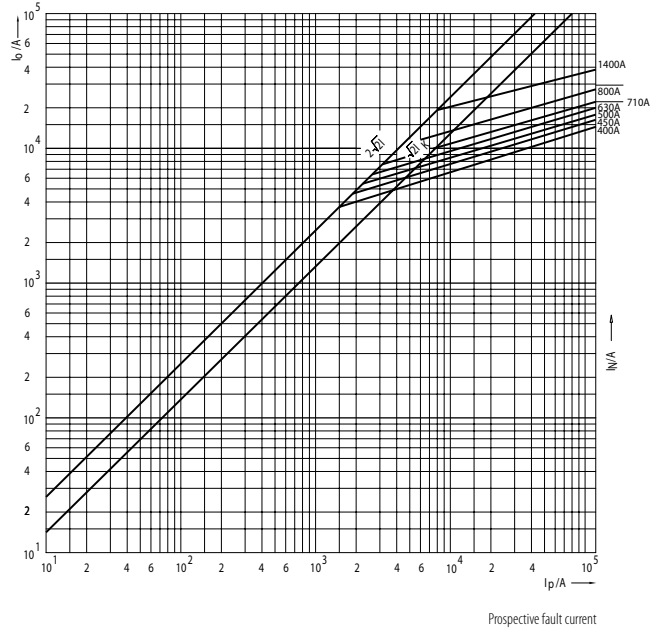
aR

RATED VOLTAGE
~690V

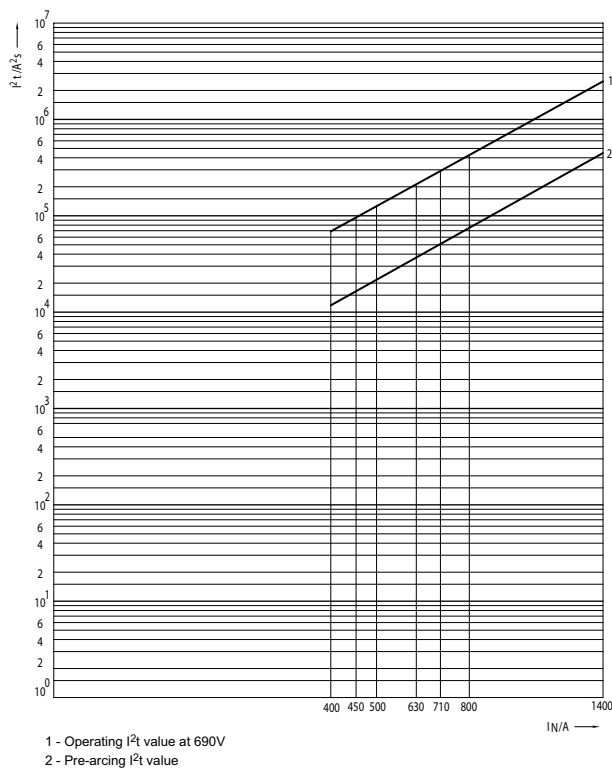
Time/current characteristics of fuse-links Ultra quick MUQ02, SUQ02, GUQ02 – size 3



Cut-off characteristics of fuse – links Ultra Quick MUQ02, SUQ02, GUQ02 – size 3



Joule integral (I^2t) for Ultra Quick MUQ02, SUQ02, GUQ02 – size 3

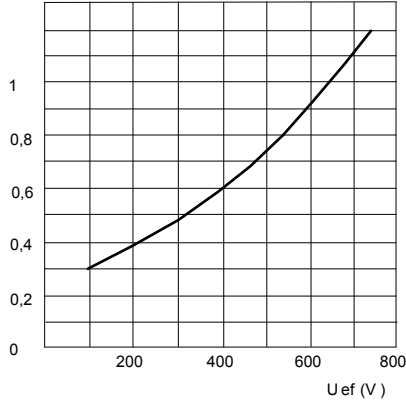


1 - Operating I^2t value at 690V
2 - Pre-arcing I^2t value

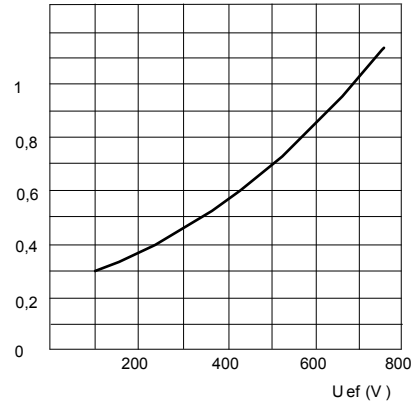
RATED VOLTAGE
~690V

aR

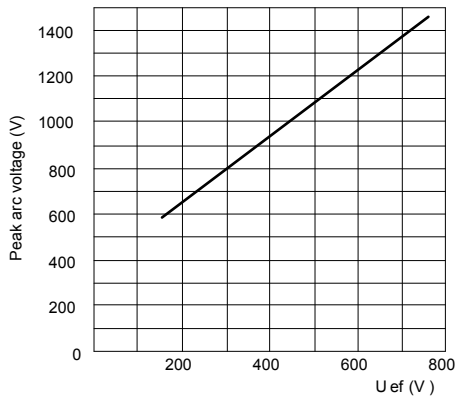
Conversion factor for total Joule integral size 00



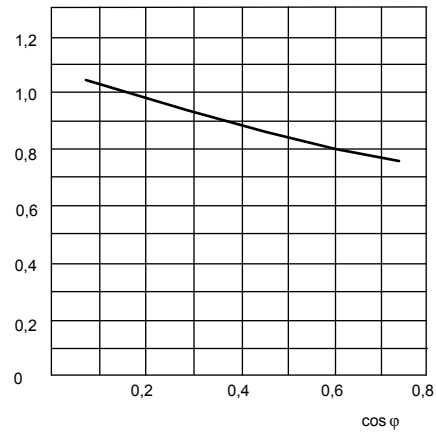
Conversion factor for total Joule integral size 1,2,3



Maximum arc voltage accuring



Correction factor for performance factor $\cos\varphi \neq 0,15$ for operating I²t values



Correction factor for converting the power dissipation for percentage load

Load(%)	Correction factor
10	0,005
20	0,025
30	0,063
40	0,122
50	0,204
60	0,31
70	0,442
80	0,6
90	0,785
100	1

CHARACTERISTICS

SYSTEM NV/NH

aR

RATED VOLTAGE
~690V

Power dissipation, pre-arcing Joule integral and Operating Joule integral for Ultra Quick

Size	I _N	Power dissipation	Pre-arcing Joule integral I ² t (1ms)	Operating Joule Integral I ² t ~230V	Operating Joule Integral I ² t ~400V	Operating Joule Integral I ² t ~500V	Operating Joule Integral I ² t ~690V
	A	W	A ² s	A ² s	A ² s	A ² s	A ² s
M00	200	46	4.200	6.547	12.685	16.368	22.000
	250	49	8.300	13.243	25.659	33.108	44.500
M1	63	15	200	357	692	893	1.200
	80	20	350	536	1.038	1.339	1.800
	100	27	450	738	1.430	1.845	2.480
	125	31	830	1.369	2.652	3.422	4.600
	160	35	1.550	2.515	4.872	6.287	8.450
	200	46	2.600	4.166	8.072	10.416	14.000
	250	51	4.800	7.738	14.992	19.344	26.000
	315	66	7.600	12.499	24.217	31.248	42.000
	350	68	11.000	16.070	31.136	40.176	54.000
	400	70	18.500	29.165	56.507	72.912	98.000
S1, G1	710	92	96.000	139.872	271.002	349.680	470.000
	250	53	4.000	6.398	12.397	15.996	21.500
M2	315	68	6.300	10.059	19.489	25.147	33.800
	350	71	9.100	14.553	28.196	36.382	48.900
	400	70	15.500	25.296	49.011	63.240	85.000
	450	75	21.500	35.712	69.192	89.280	120.000
	500	80	28.000	44.640	86.490	111.600	150.000
	550	86	36.000	56.544	109.554	141.360	190.000
	630	93	56.000	86.304	167.214	215.760	290.000
S2, G2	900	115	178.000	273.792	530.472	684.480	920.000
	1000	124	235.000	386.880	749.580	967.200	1.300.000
M3	400	81	12.800	20.534	39.785	51.336	69.000
	450	89	17.800	28.570	55.354	71.424	96.000
	500	110	23.500	37.795	73.228	94.488	127.000
	630	108	40.000	63.984	123.969	159.960	215.000
	710	112	53.000	95.232	184.512	238.080	320.000
	800	116	90.000	141.360	273.885	353.400	475.000
S3, G3	1400	156	455.000	773.760	1.499.160	1.934.400	2.600.000

ULTRA QUICK